

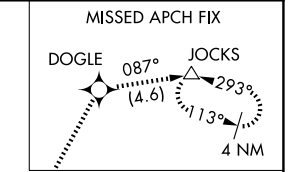
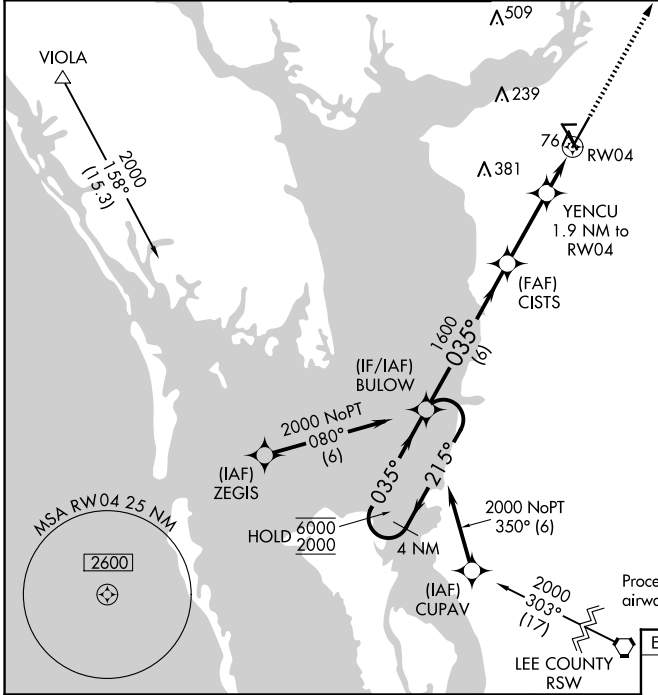
WAAS CH 48807 W04A	APP CRS 035°	Rwy Idg TDZE Apt Elev	7193 24 26
----------------------------------------	------------------------	-----------------------------	---------------------------------------

RNAV (GPS) RWY 4

PUNTA GORDA (PGD)

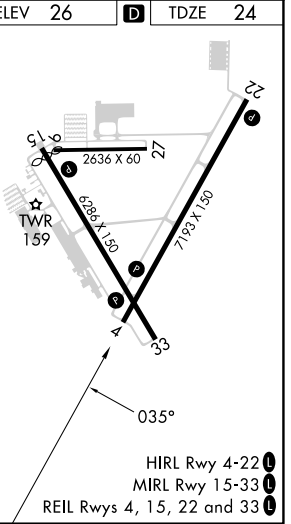
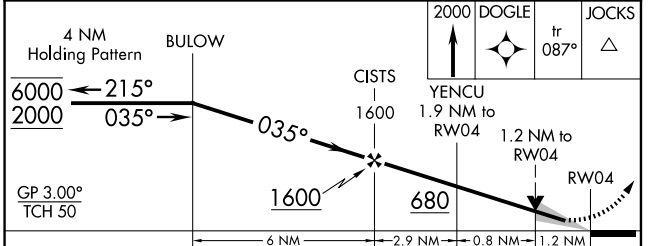
RNP APCH - GPS.				
For uncompensated Baro-VNAV systems, LNAV/VNAV NA below 3°C or above 54°C.				
ATIS ★ 135.675	FORT MYERS APP CON ★ 127.05 306.2	PUNTA GORDA TOWER ★ 121.0 (CTAF) 0	GND CON 119.55	CLNC DEL 119.55

CLNC DEL 127.05 (When twr closed)	UNICOM 122.975
------------------------------------------------	--------------------------



Procedure NA for arrival on RSW VORTAC airway radials 312 CW 016.

ELEV 26 TDZE 24



CATEGORY	A	B	C	D
LPV DA		256- ³ / ₄	232 (300- ³ / ₄)	
LNAV/VNAV DA		393-1	369 (400-1)	
LNAV MDA	440-1	416 (500-1)	440-1 ¹ / ₈	416 (500-1 ¹ / ₈)
CIRCLING	460-1	580-1	600-1 ¹ / ₂	740-2 ¹ / ₄
	434 (500-1)	554 (600-1)	574 (600-1 ¹ / ₂)	714 (800-2 ¹ / ₄)

SE-3, 23 JAN 2025 to 20 FEB 2025

SE-3, 23 JAN 2025 to 20 FEB 2025