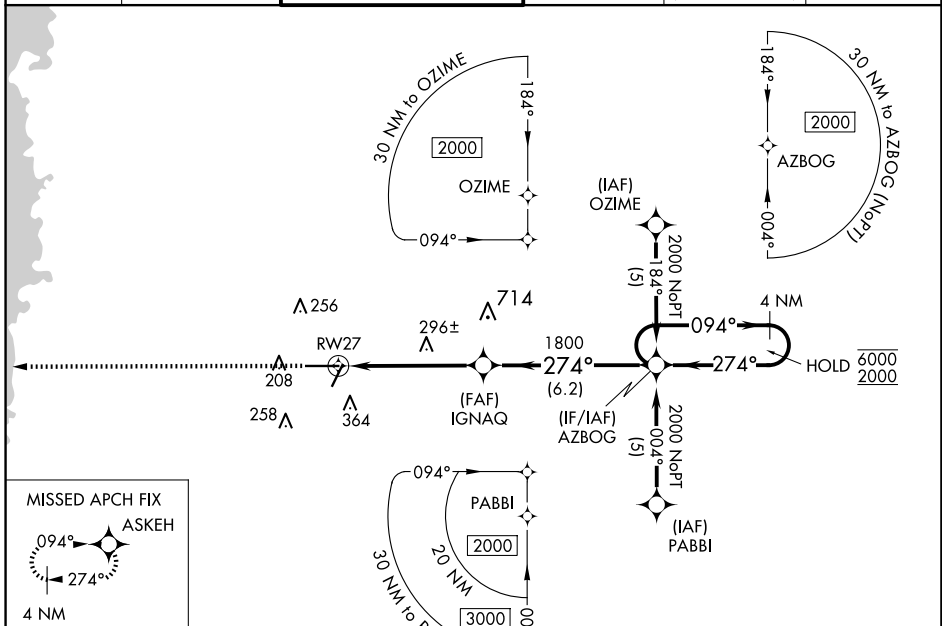


WAAS CH 86408 W27A	APP CRS 274°	Rwy Idg TDZE Apt Elev	7001 69 76
--	------------------------	-----------------------------	---------------------------------------

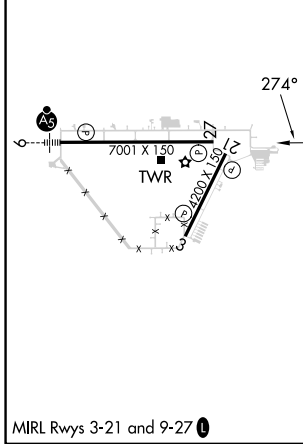
RNAV (GPS) RWY 27

BROOKSVILLE-TAMPA BAY RGNL (BKV)

RNP APCH.		MISSED APPROACH: Climb to 2000 direct ASKEH and hold.	
<p>▽ Rwy 27 helicopter visibility reduction below 3/4 SM NA. For uncompensated Baro-VNAV systems, LNAV/VNAV NA below -15°C or above 48°C.</p>			
ASOS 134.725	TAMPA APP CON 125.3 316.05	BROOKSVILLE TOWER ★ 118.55 (CTAF) 0	GND CON 121.4
		CLNC DEL 119.125 (When twr closed)	UNICOM 123.0



ELEV 76	TDZE 69
---------	---------



2000 ASKEH	VGSi and RNAV glidepath not coincident (VGSi Angle 3.00/TCH 53).	
* LNAV only.		4 NM Holding Pattern
RWY 27	IGNAQ 1800	AZBOG 6000 2000
1.4 NM	3.8 NM	6.2 NM
GP 3.00° TCH 55		

CATEGORY	A	B	C	D
LPV DA		442-1 1/4	373 (400-1 1/4)	
LNAV/VNAV DA		595-1 3/4	526 (600-1 3/4)	
LNAV MDA	620-1	551 (600-1)	620-1 5/8 551 (600-1 5/8)	620-1 3/4 551 (600-1 3/4)

SE-3, 23 JAN 2025 to 20 FEB 2025

SE-3, 23 JAN 2025 to 20 FEB 2025