

APP CRS	Rwy Idg	3558
229°	TDZE	896
	Apt Elev	896

RNAV (GPS) RWY 23

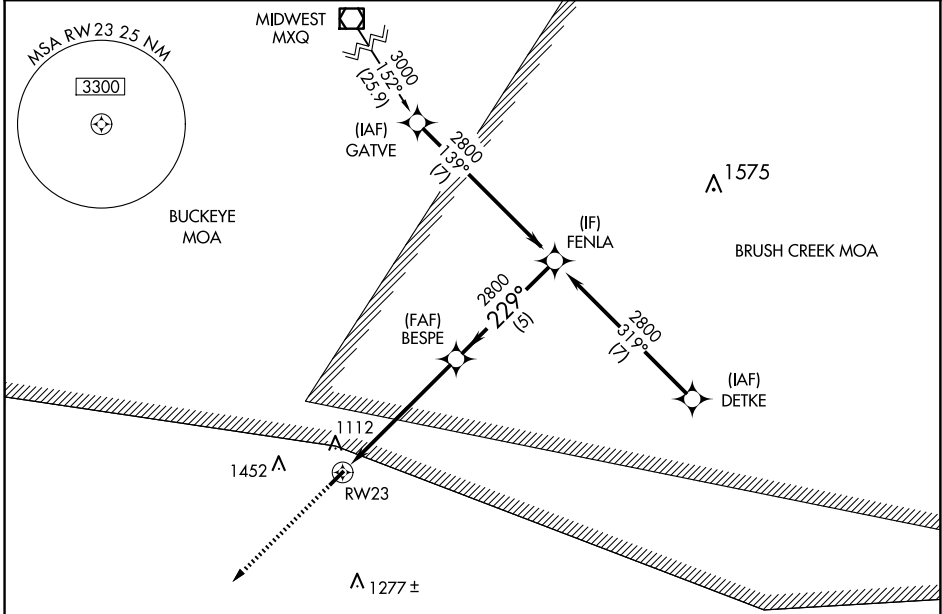
ALEXANDER SALAMON (A.M.T.)

RNP APCH - GPS.

Procedure NA at night. Rwy 23 helicopter visibility reduction below 1 SM NA.
 NA Use Flemingsburg, Kentucky altimeter setting.

MISSED APPROACH: Climb to 2800 direct EDINE and hold.

FGX AWOS-3 118.125	INDIANAPOLIS CENTER 135.575 290.5	UNICOM 122.8 (CTAF) 0
------------------------------	---	---------------------------------

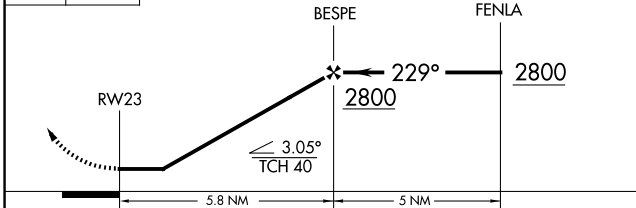


EC-2, 23 JAN 2025 to 20 FEB 2025

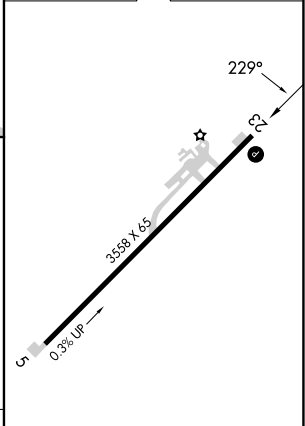
EC-2, 23 JAN 2025 to 20 FEB 2025



2800 EDINE
 VGSi and descent angles not coincident (VGSi Angle 3.30/TCH 25).



ELEV 896	TDZE 896
----------	----------



CATEGORY	A	B	C	D
LNAV MDA	1460-1	564 (600-1)	1460-1½ 564 (600-1½)	NA

REIL Rwy 5 and 23 0
 MIRL Rwy 5-23 0