

| | | | |
|--|------------------------|---|-------------|
| WAAS CH 93825 W03A | APP CRS 027° | Rwy Idg TDZE 36 Apt Elev 36 | 5500 |
|--|------------------------|---|-------------|

RNAV (GPS) RWY 3

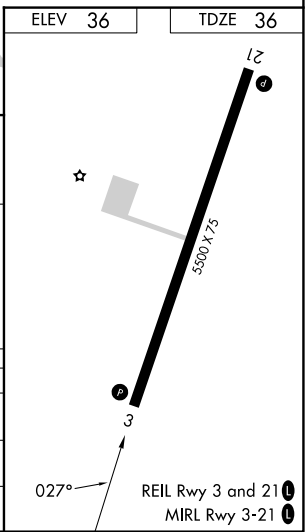
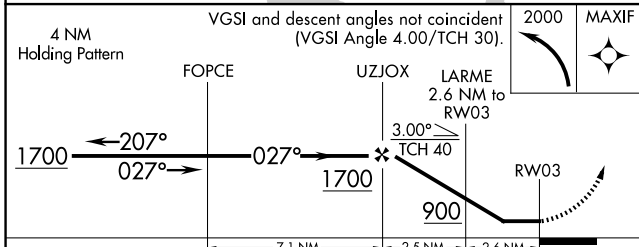
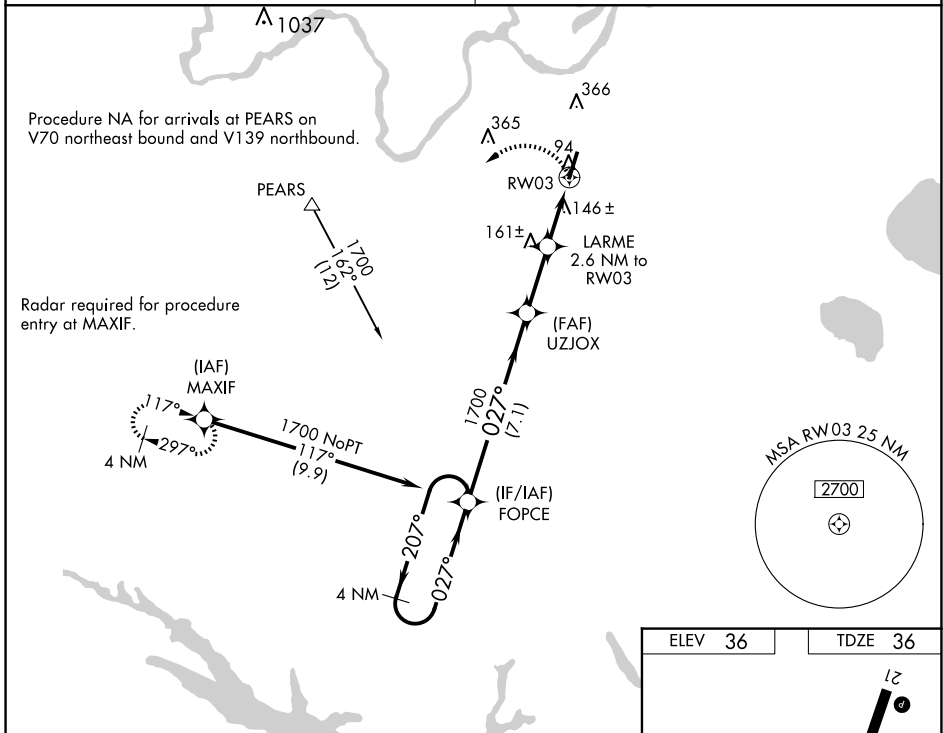
PLYMOUTH MUNI (PMZ)

⚠ Use Northeastern Rgnl altimeter setting; when not received, use Coastal Carolina Rgnl altimeter setting and increase all MDA 80 feet; increase all Cat C visibilities 1/4 SM. When VGSi inop, procedure NA at night. DME/DME RNP-0.3 NA. Visibility reduction by helicopters NA.

MISSED APPROACH: Climbing left turn to 2000 direct MAXIF and hold.

CHERRY POINT APP CON
119.35 377.175

UNICOM
122.8 (CTAF) 1



| CATEGORY | A | | B | | C | | D |
|----------|----------------------|----------------------|----------------------|-----------------|-----------|-----------------|----|
| | MDA | DA | MDA | DA | MDA | DA | |
| LP | 440-1 | 404 (500-1) | 440-1 1/8 | 404 (500-1 1/8) | 460-1 1/4 | 424 (500-1 1/4) | NA |
| LNNAV | 460-1 | 424 (500-1) | 460-1 1/4 | 424 (500-1 1/4) | 720-2 | 684 (700-2) | NA |
| CIRCLING | 520-1 484 (500-1) | 720-1 684 (700-1) | 720-2 684 (700-2) | | | | NA |

SE-2, 23 JAN 2025 to 20 FEB 2025

SE-2, 23 JAN 2025 to 20 FEB 2025