

WAAS CH <b>65999</b> <b>W05A</b>	APP CRS <b>053°</b>	Rwy Idg TDZE <b>700</b> Apt Elev <b>700</b>	<b>6007</b>
--	------------------------	---	-------------

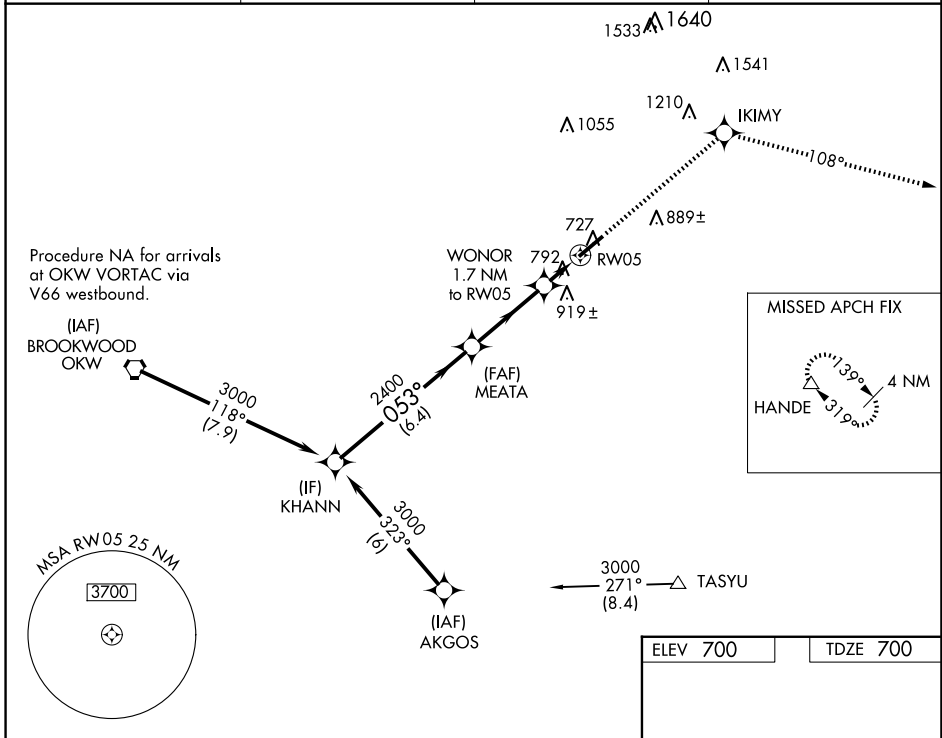
# RNAV (GPS) RWY 5

BESSEMER (EKY)

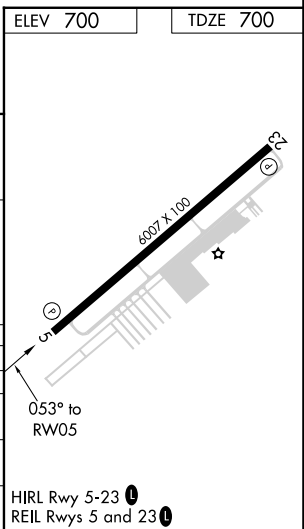
**NA** Baro-VNAV NA when using Alabaster altimeter setting. For uncompensated Baro-VNAV systems, LNAV/VNAV NA below -16°C (4°F) or above 54°C (130°F). DME/DME RNP-0.3 NA. When local altimeter setting not received, use Alabaster altimeter setting and increase LPV DA to 941 feet, LNAV/VNAV DA to 1285 feet, and all MDAs 60 feet; increase Circling Cat D visibility ¼ SM.

**MISSED APPROACH:** Climb to 4000 direct IKIMY and on track 108° to HANDE and hold.

AWOS-3PT <b>118.825</b>	BIRMINGHAM APP CON <b>124.9 351.85</b>	CLNC DEL <b>123.75</b>	UNICOM <b>123.0 (CTAF) 0</b>
----------------------------	---	---------------------------	---------------------------------



Procedure Turn NA	KHANN		MEATA		IKIMY		HANDE	
	3000		2400		4000		$\Delta$	
GP 3.00° TCH 60	053°		130°		108°		* LNAV only	
	6.4 NM		3.4 NM		1.7 NM		RW05	
CATEGORY	A	B	C	D				
LPV DA		900-3/4	200 (200-3/4)					
LNAV/VNAV DA		1244-2	544 (600-2)					
LNAV MDA	1160-1	460 (500-1)	1160-1 3/8 460 (500-1 3/8)	1160-1 1/2 460 (500-1 1/2)				
CIRCLING	1200-1	500 (500-1)	1220-1 1/2 520 (600-1 1/2)	1320-2 620 (700-2)				



SE-4, 23 JAN 2025 to 20 FEB 2025

SE-4, 23 JAN 2025 to 20 FEB 2025