

APP CRS	Rwy Idg	N/A
012°	TDZE	N/A
	Apt Elev	841

RNAV (GPS)-A

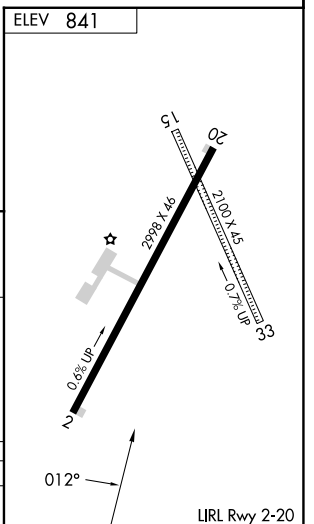
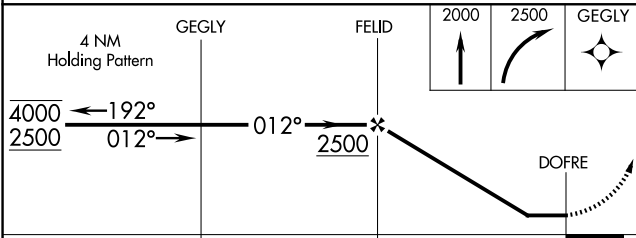
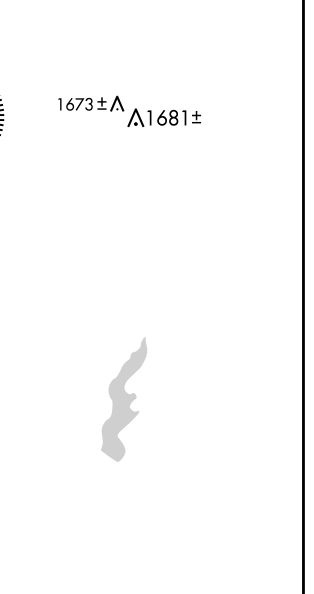
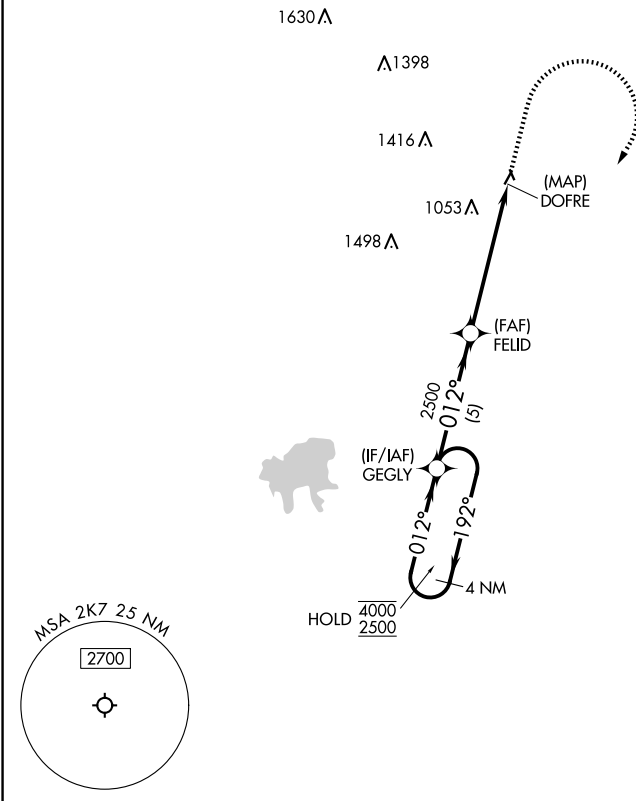
NEODESHA MUNI (2K7)

RNP APCH - GPS.

V
ΔNA Circling NA to Rwy 15 and 33. Circling Rwy 20 NA at night. Rwy 20 helicopter visibility reduction below 1 SM NA. Use Chanute altimeter setting; when not received, use Joplin altimeter setting and increase MDAs 100 feet.

MISSED APPROACH: Climb to 2000 then climbing right turn to 2500 direct GEGLY and hold.

CNU ASOS 127.075	KANSAS CITY CENTER 132.9 279.5	UNICOM 122.8 (CTAF)
----------------------------	--	-------------------------------



CATEGORY	A	B	C	D
CIRCLING	1500-1	659 (700-1)	NA	

NC-2, 23 JAN 2025 to 20 FEB 2025

NC-2, 23 JAN 2025 to 20 FEB 2025