

WAAS CH <b>86541</b> <b>W18A</b>	APP CRS <b>178°</b>	Rwy Idg TDZE Apt Elev	<b>4202</b> <b>217</b> <b>218</b>
----------------------------------------	------------------------	-----------------------------	-----------------------------------------

# RNAV (GPS) RWY 18

SPRINGHILL (SPH)

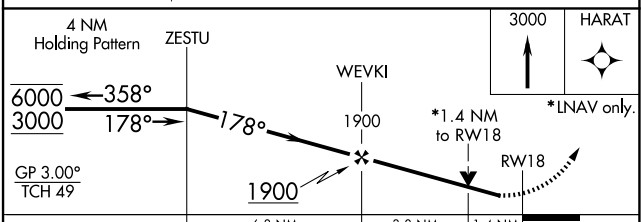
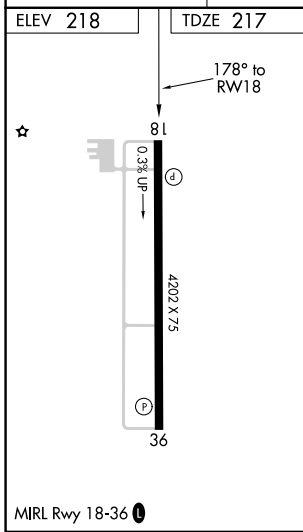
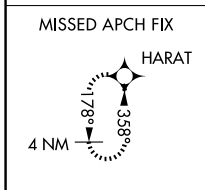
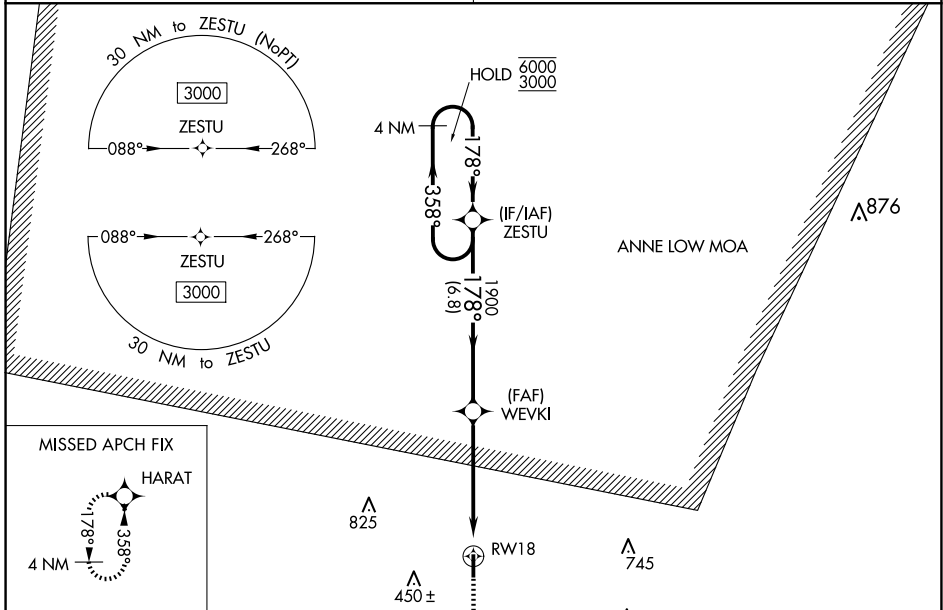
RNP APCH.

**▽** Rwy 18 helicopter visibility reduction below 3/4 SM NA.  
**▲** NA For uncompensated Baro-VNAV systems, procedure NA below -15°C or above 54°C.

MISSED APPROACH: Climb to 3000 direct HARAT and hold.

SHREVEPORT APP CON  
**123.75 360.725**

UNICOM  
**122.8 (CTAF)**



CATEGORY	A	B	C	D
LPV DA	498-7/8	281 (300-7/8)		NA
LNAV/VNAV DA	496-7/8	279 (300-7/8)		NA
LNAV MDA	700-1	483 (500-1)	700-1 3/8 483 (500-1 3/8)	NA
<b>CIRCLING</b>	700-1	482 (500-1)	820-1 1/2 602 (700-1 1/2)	NA

SC-4, 23 JAN 2025 to 20 FEB 2025

SC-4, 23 JAN 2025 to 20 FEB 2025