

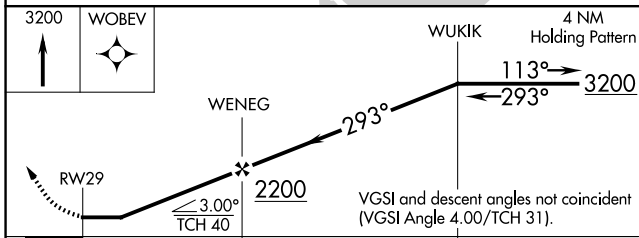
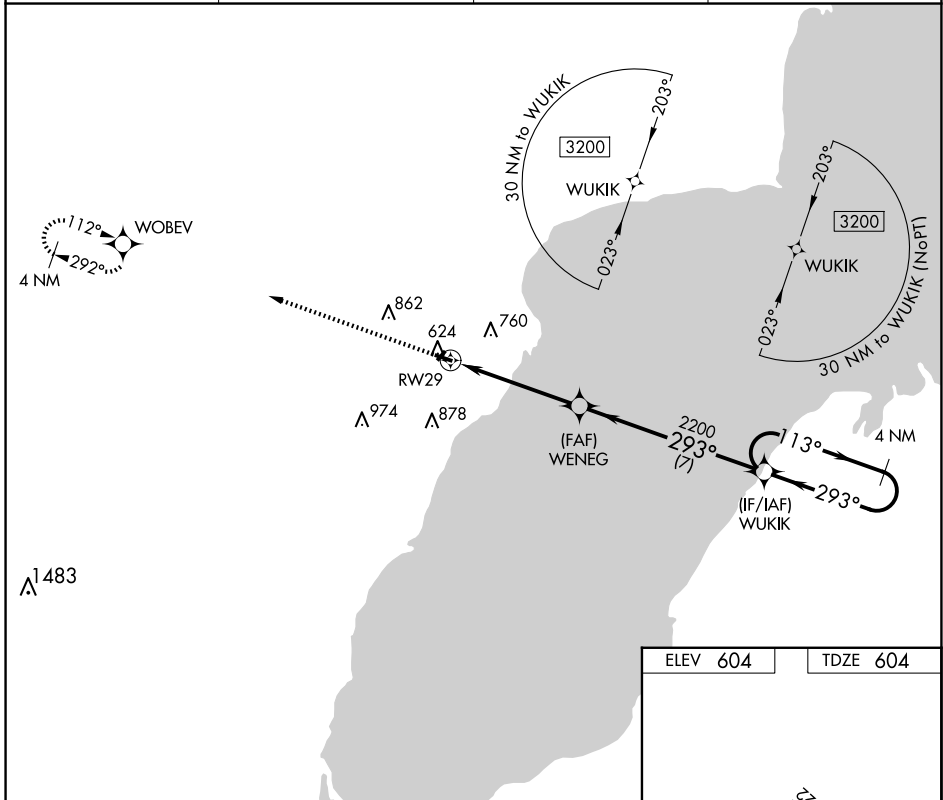
APP CRS	Rwy Idg	3198
293°	TDZE	604
	Apt Elev	604

RNAV (GPS) RWY 29

OCONTO/J DOUGLAS BAKE MUNI (OCQ)

RNP APCH - GPS.	<p>⚠ When local altimeter setting not received, use Menominee, MI altimeter setting. Procedure NA at night. Rwy 29 helicopter visibility reduction below 3/4 SM NA. Circling NA to Rwy's 4 and 22.</p>	<p>MISSED APPROACH: Climb to 3200 direct WOBEV and hold.</p>
-----------------	--	--

AWOS-3 120.925	MNM AWOS-3PT 121.45	GREEN BAY APP CON ★ 120.3 338.2	UNICOM 122.8 (CTAF)
--------------------------	-------------------------------	---	-------------------------------



ELEV 604	TDZE 604
----------	----------

REIL Rwy's 11 and 29

MIRL Rwy 11-29

CATEGORY	A	B	C	D
LNVA MDA	1120-1	516 (600-1)	1120-1 3/8 516 (600-1 3/8)	NA
CIRCLING	1120-1 516 (600-1)	1220-1 616 (700-1)	1260-1 3/4 656 (700-1 3/4)	NA

EC-3, 23 JAN 2025 to 20 FEB 2025

EC-3, 23 JAN 2025 to 20 FEB 2025