

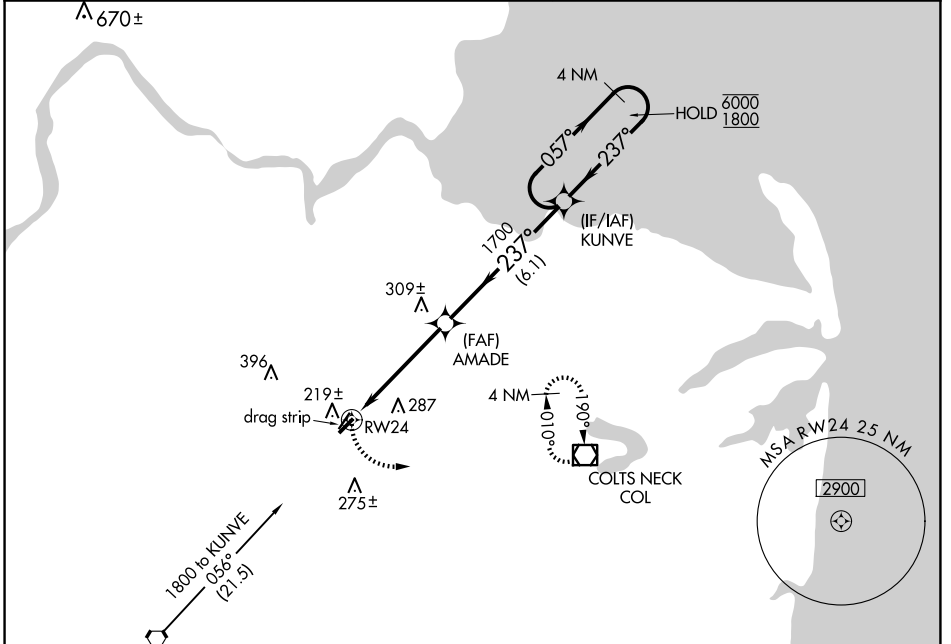
APP CRS	Rwy Idg	<b>3194</b>
<b>237°</b>	TDZE	<b>87</b>
	Apt Elev	<b>87</b>

# RNAV (GPS) RWY 24

OLD BRIDGE (3N6)

RNP APCH - GPS.		MISSED APPROACH: Climbing left turn to 2000 direct COL VOR/DME and hold.
<p><b>▼</b> Procedure NA at night. Rwy 24 helicopter visibility reduction below 1 SM NA.</p> <p><b>▲ NA</b> Use Belmar/Farmingdale altimeter setting; when not received, use Wrightstown altimeter setting and increase all MDA 20 feet.</p>		

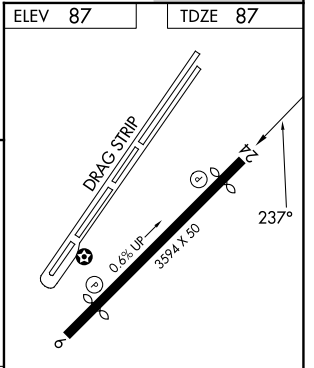
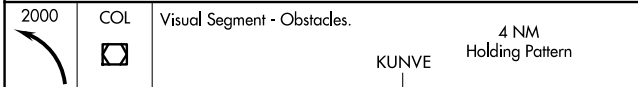
BLM AWOS-3PT <b>121.625</b>	MC GUIRE APP CON <b>126.475 363.8</b>	GCO <b>121.725</b>	UNICOM <b>123.075 (CTAF)</b> <b>📻</b>
--------------------------------	--	-----------------------	--



NE-2, 23 JAN 2025 to 20 FEB 2025

NE-2, 23 JAN 2025 to 20 FEB 2025

ELEV <b>87</b>	TDZE <b>87</b>
----------------	----------------



CATEGORY	A	B	C	D
LNAV MDA	620-1	533 (600-1)	NA	
CIRCLING	620-1 533 (600-1)	640-1 553 (600-1)	NA	

REIL Rwy 6 and 24 **📻**  
MIRL Rwy 6-24 **📻**