

WAAS CH 86638 W24A	APP CRS 235°	Rwy Idg 5500
		TDZE 86
		Apt Elev 99

RNAV (GPS) RWY 24

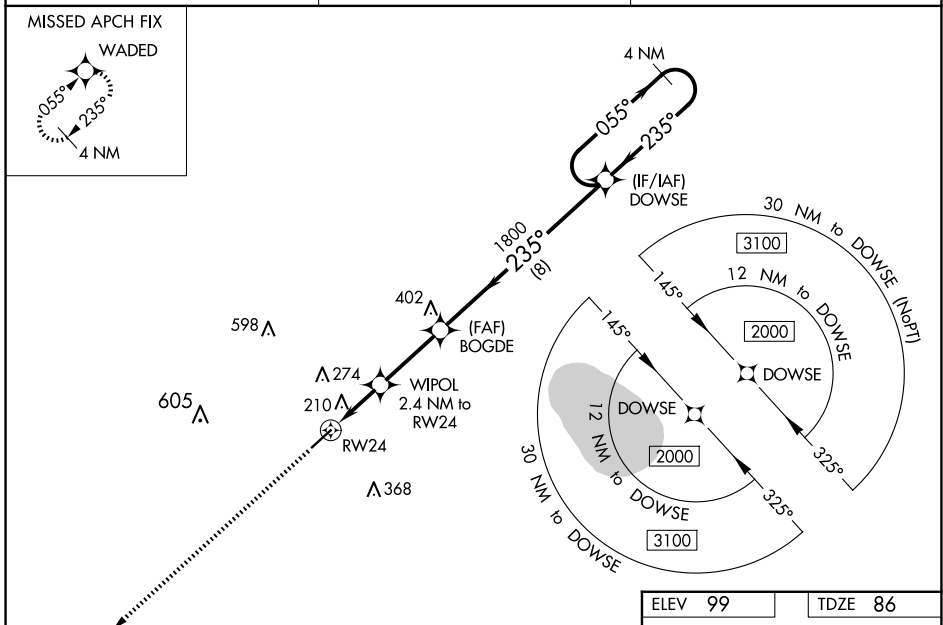
COLUMBUS COUNTY MUNI (CPC)

RNP APCH.

▼ For uncompensated Baro-VNAV systems, LNAV/VNAV NA below -15°C (5°F) or above 54°C (130°F). Baro-VNAV and VDP NA when using Elizabethtown altimeter setting.
 ▲ Helicopter visibility reduction below ¾ SM NA. When local altimeter setting not received, use Elizabethtown altimeter setting and increase LPV DA to 427 feet, LNAV/VNAV DA to 441 feet and all visibilities ¼ mile. Increase all MDA 60 feet and all Cat C and D visibilities ¼ mile.

MISSED APPROACH:
Climb to 2000 direct
WADED and hold.

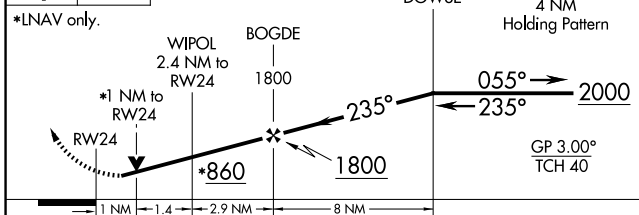
AWOS-3 118.375	MYRTLE BEACH APP CON * 119.2 350.3	UNICOM 122.8 (CTAF) 0
--------------------------	--	---------------------------------



SE-2, 23 JAN 2025 to 20 FEB 2025

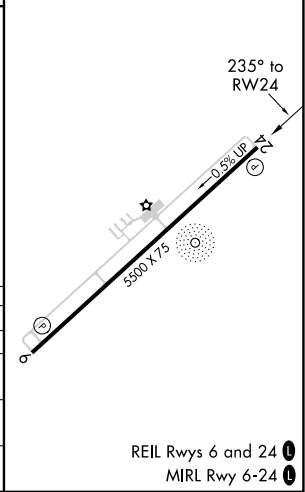
SE-2, 23 JAN 2025 to 20 FEB 2025

2000	WADED	VGSI and RNAV glidepath not coincident (VGSI Angle 3.25/TCH 42).
------	-------	--



*LNAV only.		DOWSE 4 NM Holding Pattern			
CATEGORY		A	B	C	D
LPV DA			374-1	288 (300-1)	
LNAV/VNAV DA			388-1½	302 (300-1½)	
LNAV MDA			460-1	374 (400-1)	
CIRCLING		520-1	580-1	680-1½	780-2¼
		421 (500-1)	481 (500-1)	581 (600-1½)	681 (700-2¼)

ELEV 99	TDZE 86
---------	---------



REIL Rws 6 and 24 0
MIRL Rwy 6-24 0