

WAAS CH 87024 W08A	APP CRS 083°	Rwy Idg 3297 TDZE 879 Apt Elev 881
--	------------------------	---

RNAV (GPS) RWY 8

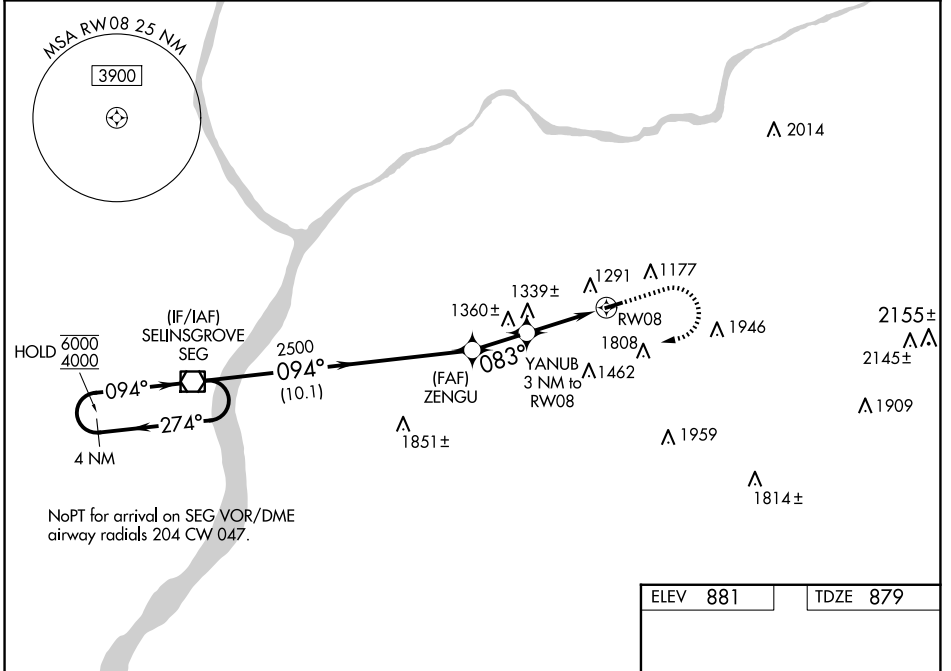
NORTHUMBERLAND COUNTY (N79)

RNP APCH - GPS.

NA Baro-VNAV and VDP NA when using Selinsgrove altimeter setting. Rwy 8 helicopter visibility reduction below 3/4 SM NA. For uncompensated Baro-VNAV systems, LNAV/VNAV NA below -16°C or above 54°C. When local altimeter setting not received, use Selinsgrove altimeter setting and increase LPV DA to 1221 feet; increase LNAV/VNAV DA to 1695 feet and all visibilities 1/2 SM. Increase all MDAs 100 feet and LNAV visibility Cat C 1/2 SM.

MISSED APPROACH:
Climb to 2300 then climbing right turn to 4000 direct SEG VOR/DME and hold.

AWOS-3 119.175	HARRISBURG APP CON 118.25 269.45	UNICOM 122.8 (CTAF)	121.8
--------------------------	--	-------------------------------	--------------



NE-4, 23 JAN 2025 to 20 FEB 2025

NE-4, 23 JAN 2025 to 20 FEB 2025

4 NM Holding Pattern		SEG VOR/DME		2300	4000	SEG
6000 ← 274°		094° →				
4000		094°				
GP 3.00°		2500				
TCH 40		083°				
		1840				
		2.2 NM				
		0.8				
		2.2 NM				
		10.1 NM				
		2.1 NM				
CATEGORY	A	B	C	D		
LPV DA	1129-1	250 (300-1)	NA			
LNAV/VNAV DA	1603-2	724 (800-2)	NA			
LNAV MDA	1620-1 741 (800-1)	1620-1 1/4 741 (800-1 1/4)	1620-2 741 (800-2)	NA		
CIRCLING	1820-1 1/4 939 (1000-1 1/4)	1880-1 1/2 999 (1000-1 1/2)	2120-3 1239 (1300-3)	NA		

ELEV 881	TDZE 879
----------	----------

MIRL Rwy 8-26
REIL Rws 8 and 26