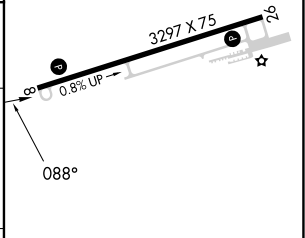
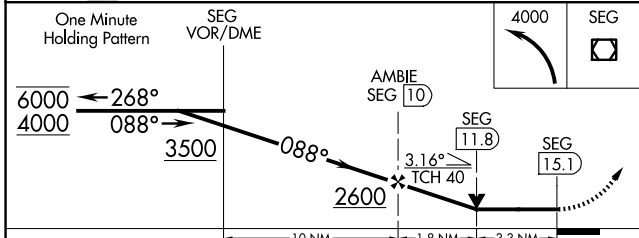
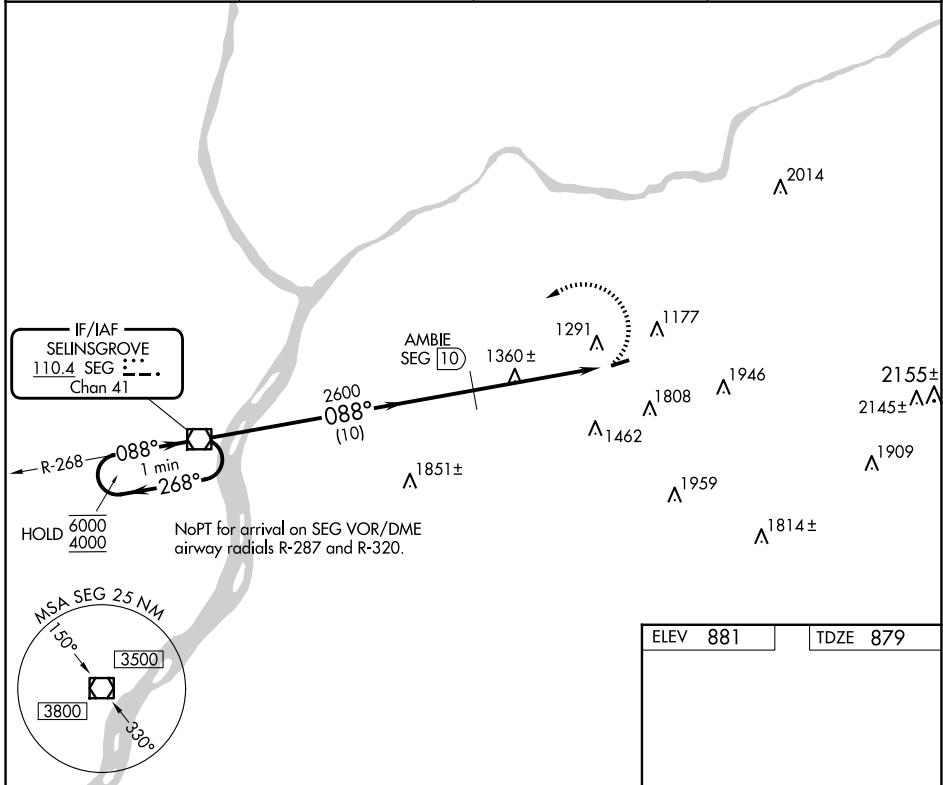


VOR/DME SEG	APP CRS	Rwy Idg	3297
110.4	088°	TDZE	879
Chan 41		Apt Elev	881

VOR RWY 8
NORTHUMBERLAND COUNTY (N79)

DME required.	MISSED APPROACH: Climbing left turn to 4000 direct SEG VOR/DME and hold.
▽ Rwy 8 helicopter visibility reduction below ¼ SM NA. ▲ NA When local altimeter setting not received, use Selingsgrove altimeter setting and increase all MDAs 100 feet.	

AWOS-3 119.175	HARRISBURG APP CON 118.25 269.45	UNICOM 122.8 (CTAF)	121.8 0
--------------------------	--	-------------------------------	-----------------------



CATEGORY	A	B	C	D
S-8	1960-1¼ 1081 (1100-1¼)	1960-1½ 1081 (1100-1½)	1960-3 1081 (1100-3)	NA
CIRCLING	1960-1¼ 1079 (1100-1¼)	1960-1½ 1079 (1100-1½)	2120-3 1239 (1300-3)	NA

MIRL Rwy 8-26					
REIL Rws 8 and 26					
FAF to MAP 5.1 NM					
Knots	60	90	120	150	180
Min:Sec	5:06	3:24	2:33	2:02	1:42

NE-4, 23 JAN 2025 to 20 FEB 2025

NE-4, 23 JAN 2025 to 20 FEB 2025