

FORT INDIANTOWN GAP, PENNSYLVANIA

COPTER RNAV (GPS) RWY 25

WAAS CH 95177 W25A	APCH CRS 250°	Rwy ldg TDZE Arprt Elev	3860 487 487
--------------------------	------------------	-------------------------------	--------------------

-(USA)

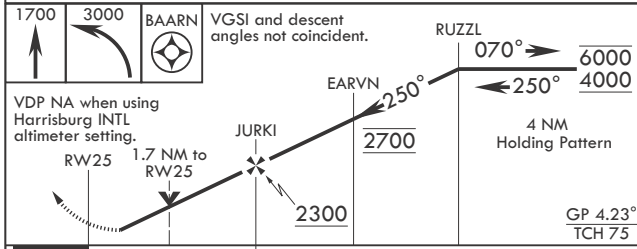
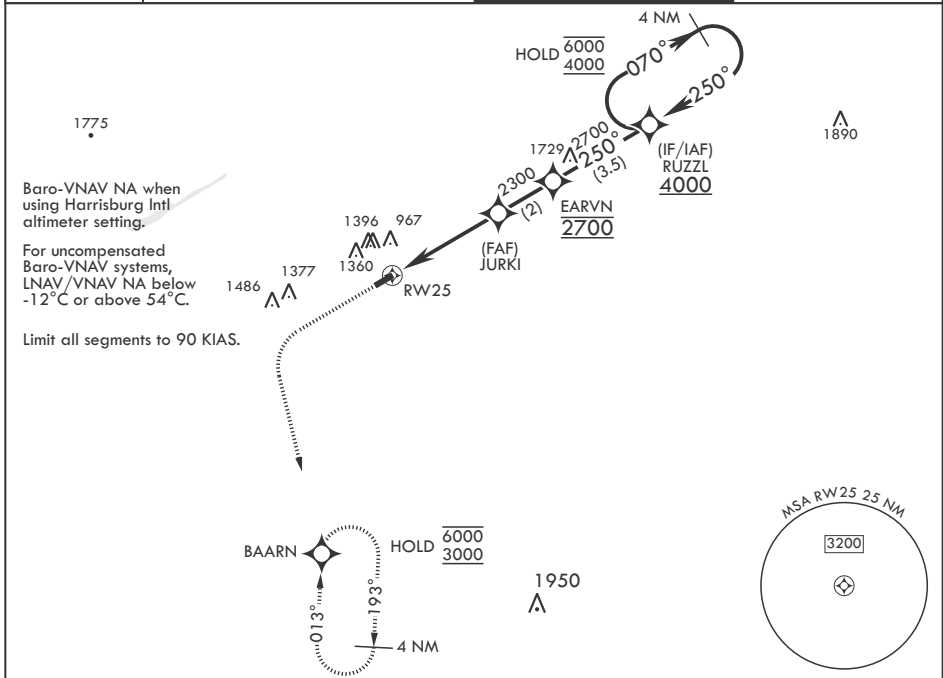
MUIR AHP (KMUI)

RNP APCH - GPS

▼ * When local altimeter not received, use Harrisburg Intl altimeter setting. Increase all DA by 64', vis by 1/8 miles.
 ** When local altimeter not received, use Harrisburg Intl altimeter setting. Increase MDA 80', vis 1/4 miles.

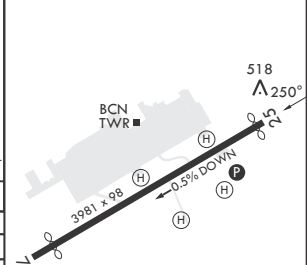
MISSED APPROACH: Climb to 1700 then climbing left turn to 3000 direct to BAARN and hold.

ASOS 124.175	HARRISBURG APP CON/DEP CON 118.25 269.45	TOWER ★ 126.2 (CTAF) 0 290.325	GND CON 135.675 269.525
-----------------	---	-----------------------------------	----------------------------



ELEV 487	TDZE 487
----------	----------

Rwy 7 ldg 3631'
Rwy 25 ldg 3860'



CATEGORY	COPTER	
LPV DA*	816-1	329 (400-1)
LNAV/VNAV DA*	1166-1 ⁷ / ₈	679 (700-1 ⁷ / ₈)
LNAV MDA**	1300-1	813 (900-1)
WITH HARRISBURG INTL ALTIMETER SETTING		
LPV DA	880-1 ¹ / ₈	393 (400-1 ¹ / ₈)
LNAV/VNAV DA	1230-2	743 (800-2)
LNAV MDA	1380-1 ¹ / ₄	893 (900-1 ¹ / ₄)

MIRL all Rwys
REIL all Rwys

FORT INDIANTOWN GAP, PENNSYLVANIA

40°26'N - 76°34'W

MUIR AHP (KMUI)

Amdt 1 23JAN25

COPTER RNAV (GPS) RWY 25

NE-4, 23 JAN 2025 to 20 FEB 2025

NE-4, 23 JAN 2025 to 20 FEB 2025