

WAAS CH <b>70543</b> <b>W01A</b>	APP CRS <b>007°</b>	Rwy Idg TDZE Apt Elev	<b>3420</b> <b>1023</b> <b>1023</b>
--	------------------------	-----------------------------	---

# RNAV (GPS) RWY 1

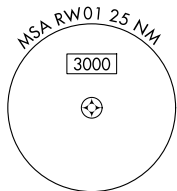
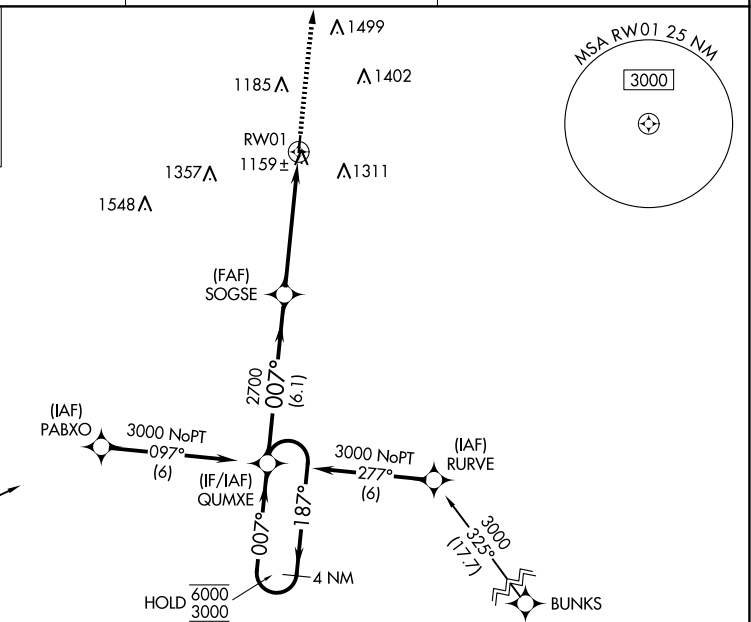
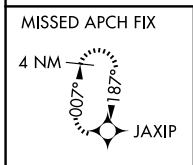
CUBA MUNI (UBX)

RNP APCH - GPS.

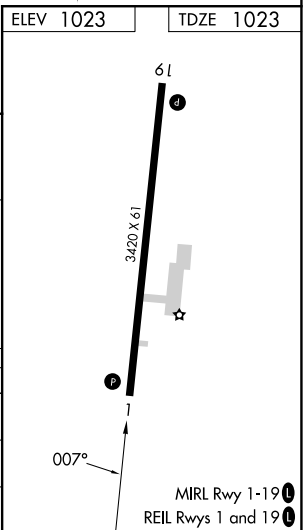
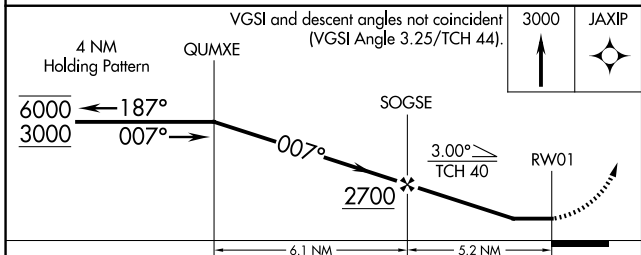
Procedure NA at night. Rwy 1 helicopter visibility reduction below 1 SM NA. Use Rolla/Vichy altimeter setting; when not received, use Fort Leonard Wood altimeter setting; increase all MDAs 60 feet and increase Cat B Circling visibility ¼ SM.

MISSED APPROACH: Climb to 3000 direct JAXIP and hold.

VIH ASOS <b>119.025</b>	KANSAS CITY CENTER <b>128.35 284.675</b>	UNICOM <b>122.8 (CTAF) 0</b>
----------------------------	---	---------------------------------



Procedure NA for arrivals at BACTA on V289 southbound.



CATEGORY	A	B	C	D
LP MDA	1480-1	457 (500-1)		NA
LNAV MDA	1480-1	457 (500-1)		NA
CIRCLING	1560-1 537 (600-1)	1780-1 757 (800-1)		NA

NC-3, 23 JAN 2025 to 20 FEB 2025

NC-3, 23 JAN 2025 to 20 FEB 2025