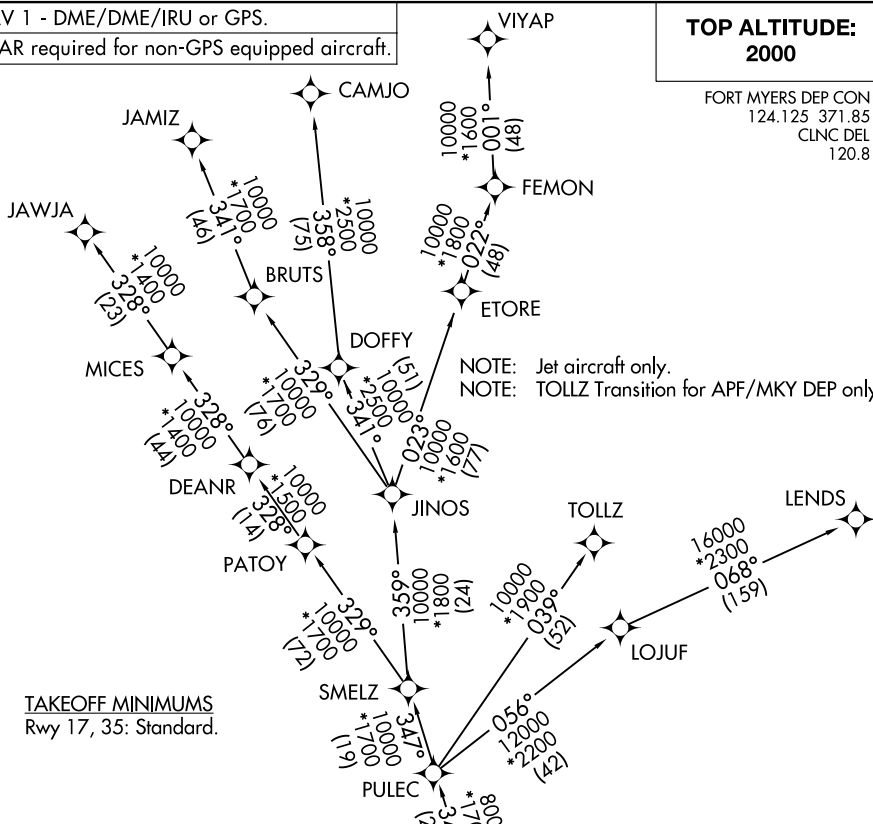


# CSHEL SEVEN DEPARTURE (RNAV)

RNAV 1 - DME/DME/IRU or GPS.  
RADAR required for non-GPS equipped aircraft.

**TOP ALTITUDE:  
2000**

FORT MYERS DEP CON\*  
124.125 371.85  
CLNC DEL  
120.8



TAKEOFF MINIMUMS  
Rwy 17, 35: Standard.

NOTE: Jet aircraft only.  
NOTE: TOLLZ Transition for APF/MKY DEP only.

SE-3, 23 JAN 2025 to 20 FEB 2025

SE-3, 23 JAN 2025 to 20 FEB 2025

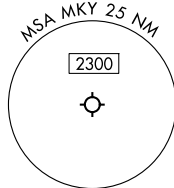
## DEPARTURE ROUTE DESCRIPTION

TAKEOFF RUNWAY 17: Climb on assigned heading for RADAR vectors to CSHEL, thence...

TAKEOFF RUNWAY 35: Climb on heading 005° to 700, for RADAR vectors to CSHEL, thence. . . .

. . . on assigned transition. Maintain 2000. Expect clearance to filed altitude within 10 minutes after departure.

- CAMJO TRANSITION (CSHEL7.CAMJO)
- JAMIZ TRANSITION (CSHEL7.JAMIZ)
- JAWJA TRANSITION (CSHEL7.JAWJA)
- LENDZ TRANSITION (CSHEL7.LENDZ)
- TOLLZ TRANSITION (CSHEL7.TOLLZ)
- VIYAP TRANSITION (CSHEL7.VIYAP)



NOTE: Chart not to scale.

# CSHEL SEVEN DEPARTURE (RNAV)

(CSHEL7.CSHEL) 31OCT24