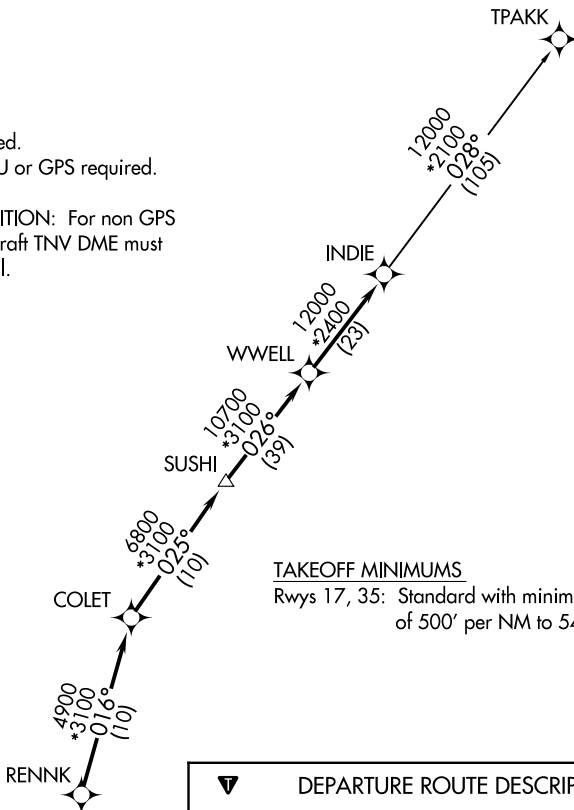


# INDIE EIGHT DEPARTURE (RNAV)

**TOP ALTITUDE:  
ASSIGNED BY ATC**

ASOS  
119.925  
CLNC DEL  
125.2  
CTAF  
123.0  
HOUSTON DEP CON  
134.45 284.0

NOTE: RADAR required.  
NOTE: DME/DME/IRU or GPS required.  
NOTE: RNAV 1.  
NOTE: TPAKK TRANSITION: For non GPS equipped aircraft TNV DME must be operational.



TAKEOFF MINIMUMS  
Rwys 17, 35: Standard with minimum climb of 500' per NM to 540.

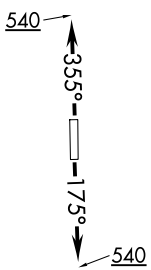
**▼ DEPARTURE ROUTE DESCRIPTION**

TAKEOFF RUNWAY 17: Climb on heading 175° to 540 for RADAR vectors to RENNK, thence . . . .

TAKEOFF RUNWAY 35: Climb on heading 355° to 540 for RADAR vectors to RENNK, thence . . . .

. . . . on track 016° to COLET, then on track 025° to SUSHI, then on track 026° to WWELL, then on track 026° to INDIE, then on (transition). Maintain ATC assigned altitude. Expect filed altitude 10 minutes after departure.

TPAKK TRANSITION (INDIE8.TPAKK)



NOTE: Chart not to scale.

SC-5, 23 JAN 2025 to 20 FEB 2025

SC-5, 23 JAN 2025 to 20 FEB 2025