

LOC/DME I-EYK 111.7 Chan 54	APP CRS 048°	Rwy Idg 5500 TDZE 18 Apt Elev 19
---	------------------------	---

ILS or LOC RWY 5

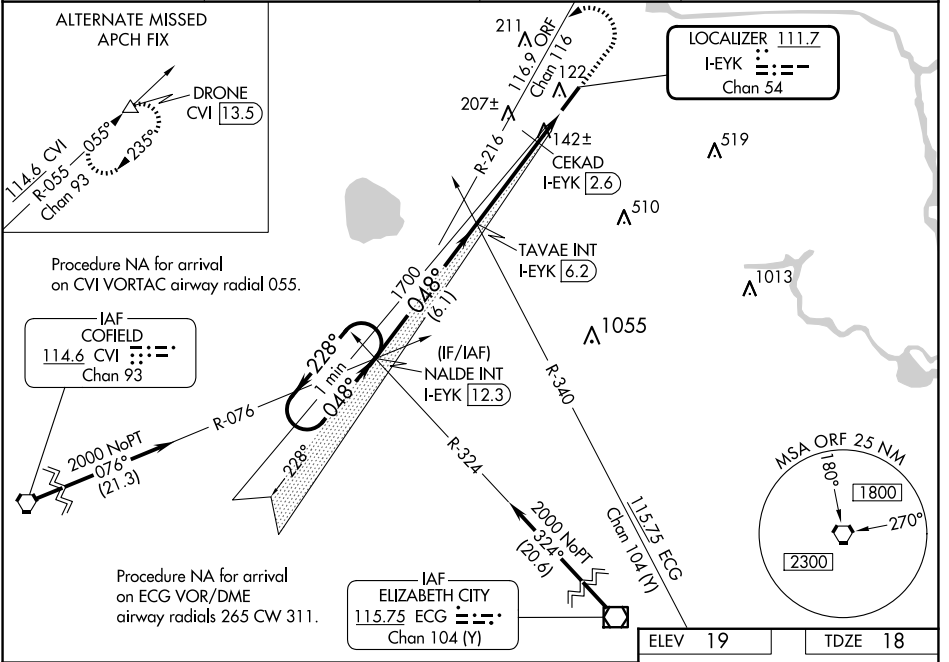
CHESAPEAKE RGNL (CPK)

⚠ When local altimeter setting not received, use Norfolk Intl altimeter setting and increase all DA 36 feet and all MDA 40 feet; increase CEKAD Fix Minimums S-LOC 5 Cats C and D visibility 1/8 mile. For inoperative MALSR, increase S-LOC 5 Cats C and D visibility to 1/8 mile.

MALSR

MISSED APPROACH: Climb to 500 then climbing left turn to 2000 on ORF VORTAC R-216 to NALDE INT/I-EYK 12.3 DME and hold.

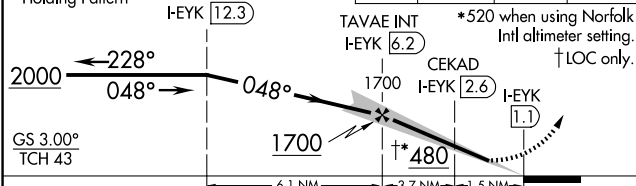
AWOS-3 123.675	NORFOLK APP CON 118.9 353.7	GCO 135.075	UNICOM 123.075 (CTAF) 0
--------------------------	---------------------------------------	-----------------------	-----------------------------------



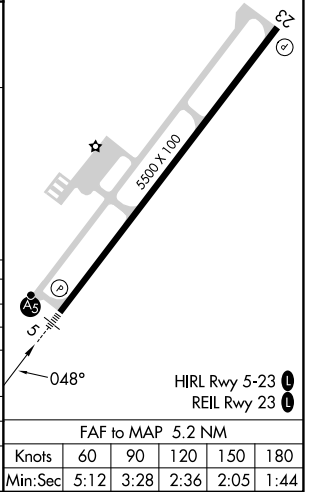
NE-3, 23 JAN 2025 to 20 FEB 2025

NE-3, 23 JAN 2025 to 20 FEB 2025

ELEV 19	TDZE 18
----------------	----------------



CATEGORY	A	B	C	D
S-ILS 5	218-1/2 200 (200-1/2)			
S-LOC 5	480-1/2	462 (500-1/2)	480-1	462 (500-1)
CIRCLING	480-1	461 (500-1)	520-1/2 501 (600-1/2)	580-2 561 (600-2)
CEKAD FIX MINIMUMS				
S-LOC 5	400-1/2	382 (400-1/2)	400-5/8	382 (400-5/8)
CIRCLING	460-1 441 (500-1)	480-1 461 (500-1)	520-1/2 501 (600-1/2)	580-2 561 (600-2)



FAF to MAP 5.2 NM	Knots	60	90	120	150	180
	Min:Sec	5:12	3:28	2:36	2:05	1:44