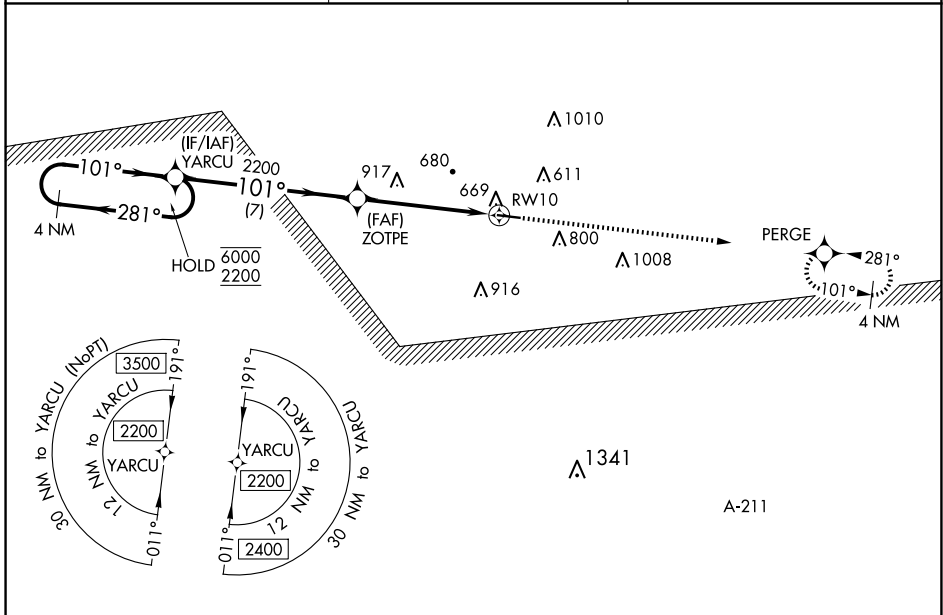


WAAS CH <b>53436</b> <b>W10A</b>	APP CRS <b>101°</b>	Rwy Idg TDZE Apt Elev	<b>4732</b> <b>434</b> <b>435</b>
--	------------------------	-----------------------------	---

# RNAV (GPS) RWY 10

CLAYTON MUNI (11A)

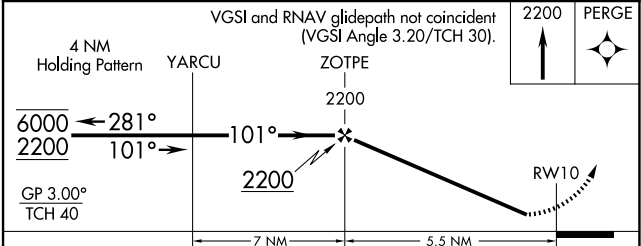
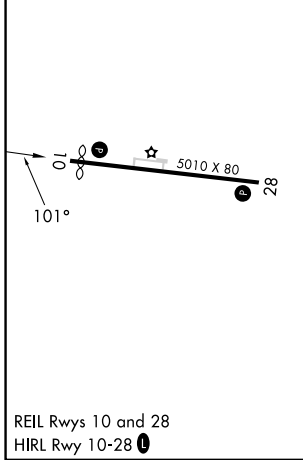
RNP APCH - GPS.		MISSED APPROACH: Climb to 2200 direct PERGE and hold.
<p>▼ Rwy 10 helicopter visibility reduction below 3/4 SM NA. Baro-VNAV NA.                  ▲ NA Use Eufaula altimeter setting; when not received, use Troy altimeter setting.</p>		
EUF ASOS <b>128.325</b>	CAIRNS APP CON * <b>121.1 319.25</b>	CTAF <b>122.90</b>



SE-4, 23 JAN 2025 to 20 FEB 2025

SE-4, 23 JAN 2025 to 20 FEB 2025

ELEV 435	TDZE 434
----------	----------



CATEGORY	A	B	C	D
LPV DA	781-1 347 (400-1)			
LNAV/VNAV DA	1115-2½ 681 (700-2½)			
LNAV MDA	1180-1 746 (800-1)	1180-1¼ 746 (800-1¼)	1180-2 746 (800-2)	
<b>C</b> CIRCLING	1180-1 745 (800-1)	1180-1¼ 745 (800-1¼)	1180-2¼ 745 (800-2¼)	1300-2¾ 865 (900-2¾)