

APP CRS	Rwy Idg	N/A
<b>342°</b>	TDZE	N/A
	Apt Elev	<b>4705</b>

# RNAV (GPS)-A

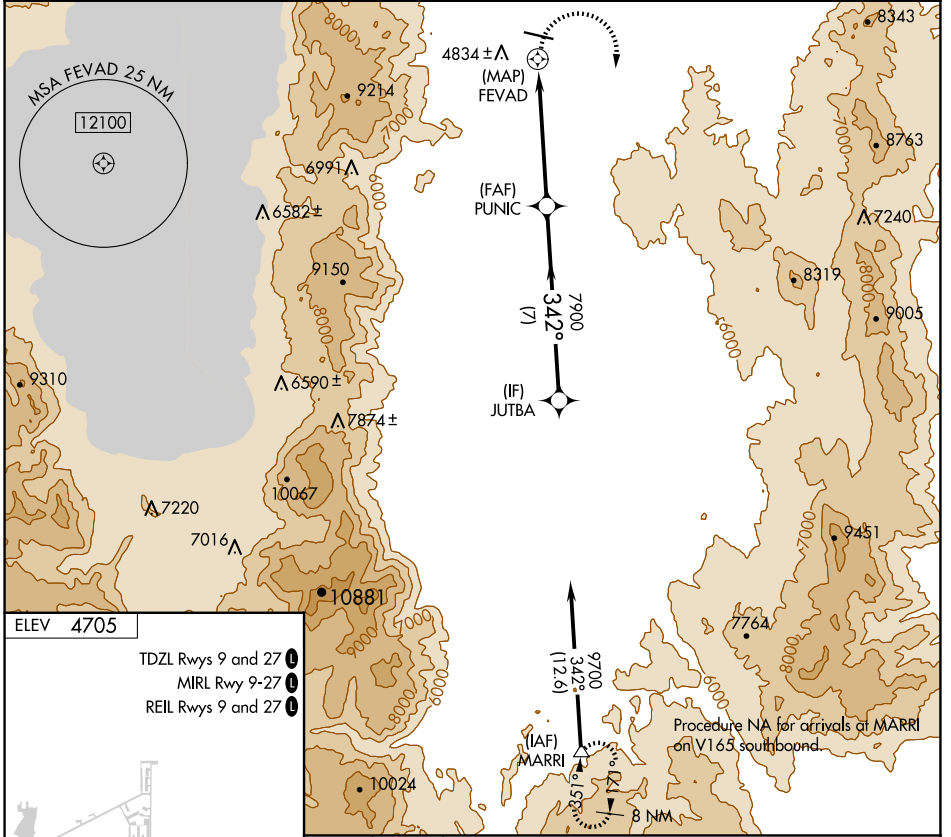
CARSON CITY (CXP)

RNP APCH.

**▽** Procedure NA at night. When local altimeter setting not received,  
**▲ NA** use Reno/Tahoe Intl altimeter setting and increase all MDA 540 feet.  
 Circling NA north of Rwy 9-27.

**MISSED APPROACH:** Climbing right turn to 13400 direct MARRI and hold, continue climb-in-hold to 13400.

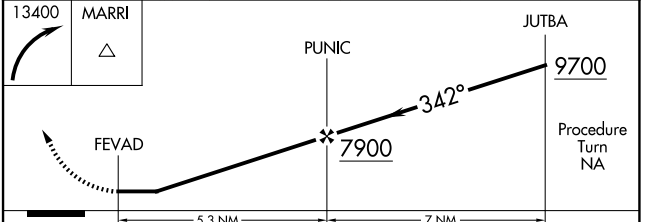
AWOS-3PT <b>119.925</b>	NORCAL APP CON <b>119.2 279.55</b>	CLNC DEL <b>133.25</b>	UNICOM <b>123.0 (CTAF) 0</b>
----------------------------	---------------------------------------	---------------------------	---------------------------------



ELEV 4705

TDZL Rwys 9 and 27 **0**  
 MIRL Rwy 9-27 **1**  
 REIL Rwys 9 and 27 **0**

342°



CATEGORY	A	B	C	D
<b>C</b> CIRCLING	6380-1¼ 1675 (1700-1¼)	6380-1½ 1675 (1700-1½)	6380-3 1675 (1700-3)	7660-3 2955 (3000-3)

SW-4, 23 JAN 2025 to 20 FEB 2025

SW-4, 23 JAN 2025 to 20 FEB 2025