

LEVELLAND, TEXAS

AL-6570 (FAA)

23334

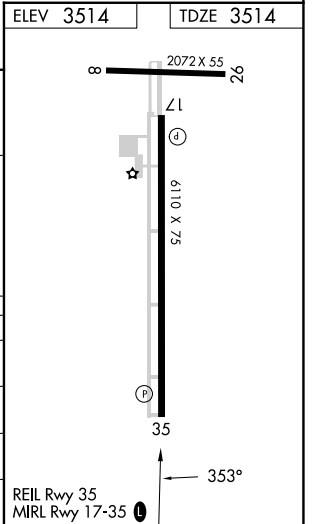
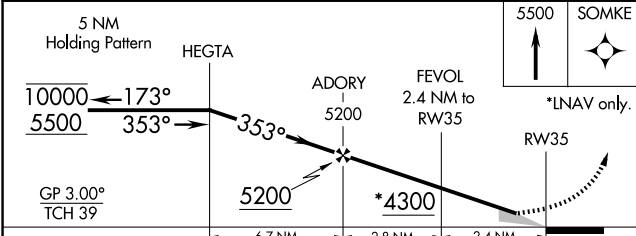
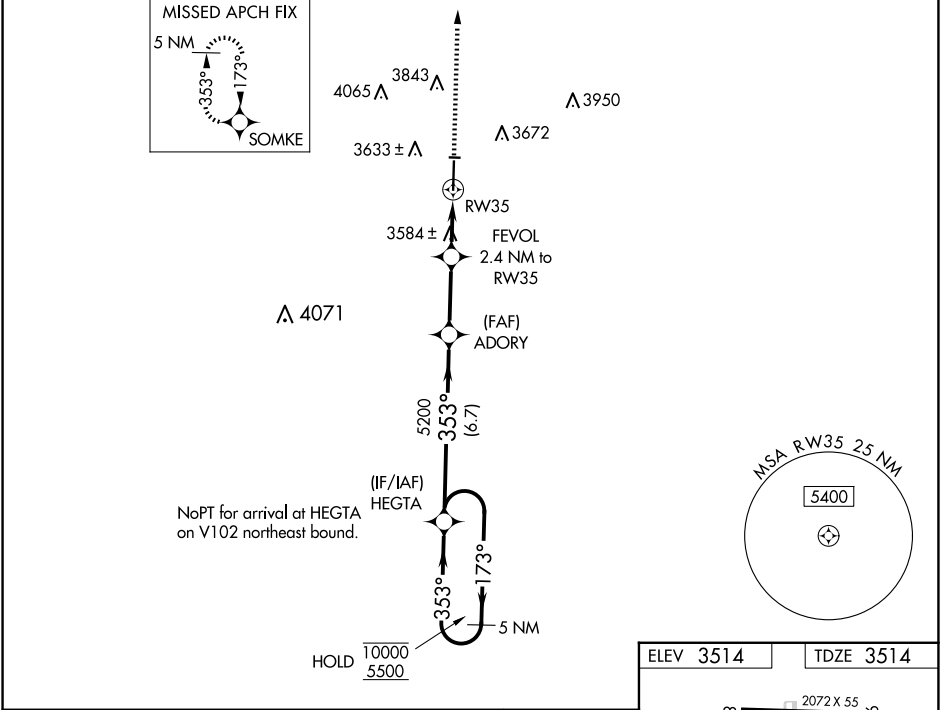
WAAS CH 65719 W35A	APP CRS 353°	Rwy Idg TDZE 3514 Apt Elev 3514
----------------------------------------	------------------------	-----------------------------------------------------

RNAV (GPS) RWY 35

LEVELLAND MUNI (LLN)

RNP APCH-GPS.	MISSED APPROACH: Climb to 5500 direct SOMKE and hold.
<p>V Baro-VNAV NA. Use Lubbock altimeter setting. Circling to Rwy 8, 26 NA at night. Circling NA west of Rwy 17-35.</p> <p>A NA</p>	

AWOS-3PT 121.125	LBB ASOS 125.3 270.275	LUBBOCK APP CON 119.2 351.8	UNICOM 122.8 (CTAF)
----------------------------	----------------------------------	---------------------------------------	-------------------------------



CATEGORY	A	B	C	D
LPV DA		3862-1 $\frac{1}{8}$	348 (400-1 $\frac{1}{8}$)	
LNAV/DA		3862-1 $\frac{1}{8}$	348 (400-1 $\frac{1}{8}$)	
LNAV MDA	3940-1	426 (500-1)	3940-1 $\frac{1}{4}$	426 (500-1 $\frac{1}{4}$)
CIRCLING	4100-1 586 (600-1)	4300-1 $\frac{1}{4}$ 786 (800-1 $\frac{1}{4}$)	4320-2 $\frac{1}{4}$ 806 (900-2 $\frac{1}{4}$)	4320-2 $\frac{1}{2}$ 806 (900-2 $\frac{1}{2}$)

LEVELLAND, TEXAS
Amdt 1C 02DEC21

33°33'N-102°22'W

RNAV (GPS) RWY 35

LEVELLAND MUNI (LLN)

SC-2, 23 JAN 2025 to 20 FEB 2025

SC-2, 23 JAN 2025 to 20 FEB 2025