

WAAS CH <b>90431</b> <b>W25A</b>	APP CRS <b>248°</b>	Rwy Idg TDZE Apt Elev	<b>4500</b> <b>681</b> <b>692</b>
--	------------------------	-----------------------------	---

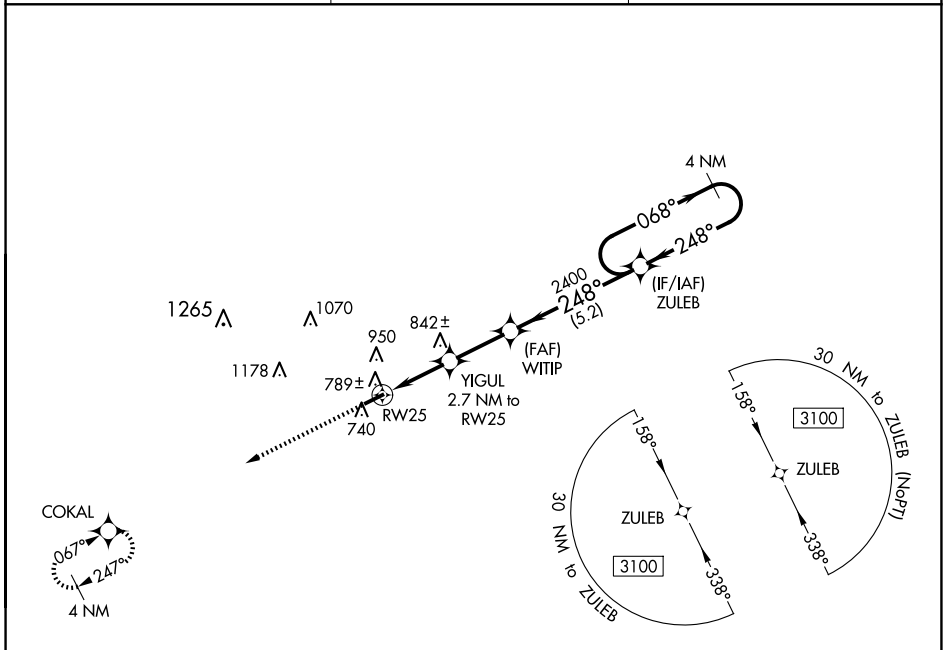
# RNAV (GPS) RWY 25

RUSSELLVILLE-LOGAN COUNTY (4M7)

**NA** Baro-VNAV NA, DME/DME RNP-0.3 NA. Use Springfield altimeter setting. Rwy 25 helicopter visibility reduction below 1 SM NA. Straight-in Rwy 25 NA at night, Circling Rwy 25 NA at night.

**MISSED APPROACH:**  
Climb to 3100 direct COKAL and hold.

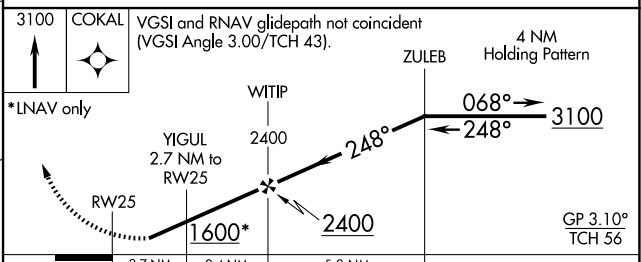
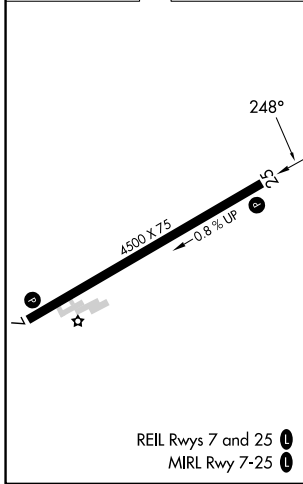
M91 AWOS-3 <b>120.675</b>	MEMPHIS CENTER <b>133.85 285.5</b>	UNICOM <b>122.7 (CTAF) 0</b>
------------------------------	---------------------------------------	---------------------------------



SE-1, 23 JAN 2025 to 20 FEB 2025

SE-1, 23 JAN 2025 to 20 FEB 2025

ELEV 692	TDZE 681
----------	----------



CATEGORY	A	B	C	D
LPV DA	985-1		304 (300-1)	
LNAV/VNAV DA	1001-1½		320 (400-1½)	
LNAV MDA	1080-1	399 (400-1)	1080-1½	399 (400-1½)
<input checked="" type="checkbox"/> CIRCLING	1320-1	628 (700-1)	1320-1¾ 628 (700-1¾)	1520-2¾ 828 (900-2¾)