

WAAS CH 50431 W07A	APP CRS 067°	Rwy Idg TDZE Apt Elev	4500 692 692
--	------------------------	-----------------------------	---

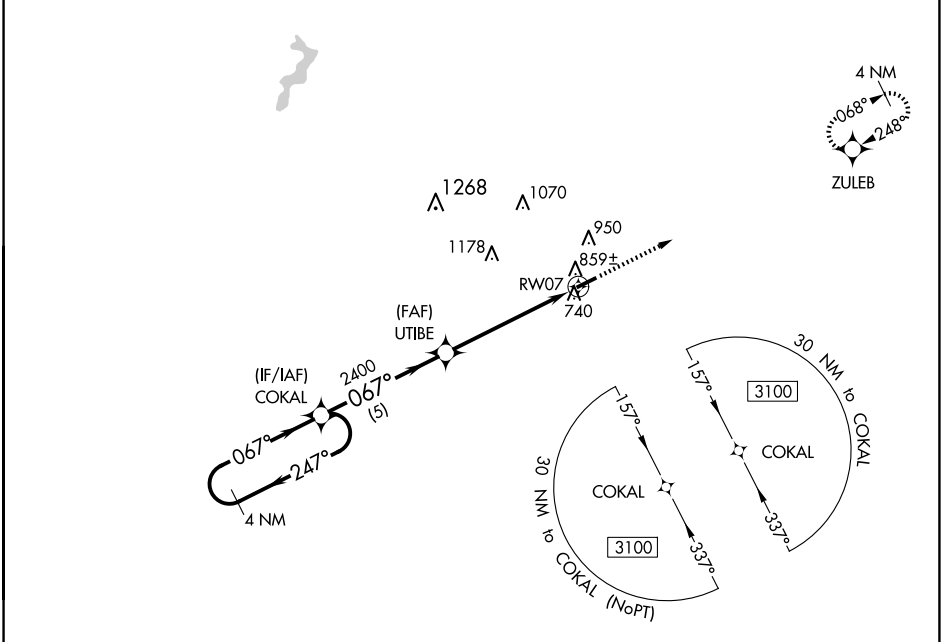
RNAV (GPS) RWY 7

RUSSELLVILLE-LOGAN COUNTY (4M7)

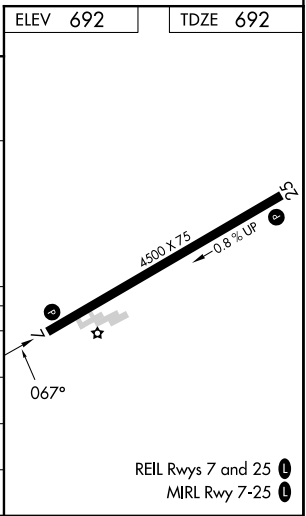
NA Baro-VNAV NA. DME/DME RNP-0.3 NA. Use Springfield altimeter setting. Circling Rwy 25 NA at night.

MISSED APPROACH: Climb to 3100 direct ZULEB and hold.

M91 AWOS-3 120.675	MEMPHIS CENTER 133.85 285.5	UNICOM 122.7 (CTAF) 0
------------------------------	---------------------------------------	---------------------------------



4 NM Holding Pattern		COKAL		UTIBE		RWY 7	
3100		2400		2400		3100 ZULEB	
←247°		←067°		←067°		↑	
067°		067°		067°		ZULEB	
GP 3.00°		5 NM		5.2 NM		COKAL (NoPT)	
TCH 40							
CATEGORY	A	B	C	D			
LPV DA	982-1		290 (300-1)				
LNAV/VNAV DA	1060-1¼		368 (400-1¼)				
LNAV MDA	1160-1	468 (500-1)	1160-1¾	468 (500-1¾)			
C CIRCLING	1320-1	628 (700-1)	1320-1¾	828 (900-2¾)			
			628 (700-1¾)	828 (900-2¾)			



REIL Rwys 7 and 25 **0**
MIRL Rwy 7-25 **0**

SE-1, 23 JAN 2025 to 20 FEB 2025

SE-1, 23 JAN 2025 to 20 FEB 2025