

WAAS CH <b>69408</b> <b>W34A</b>	APP CRS <b>342°</b>	Rwy Idg TDZE Apt Elev	<b>5498</b> <b>299</b> <b>300</b>
--	------------------------	-----------------------------	---

# RNAV (GPS) RWY 34

ANSON COUNTY/JEFF CLOUD FLD (A/F/P)

RNP APCH - GPS.

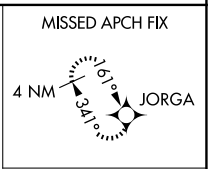
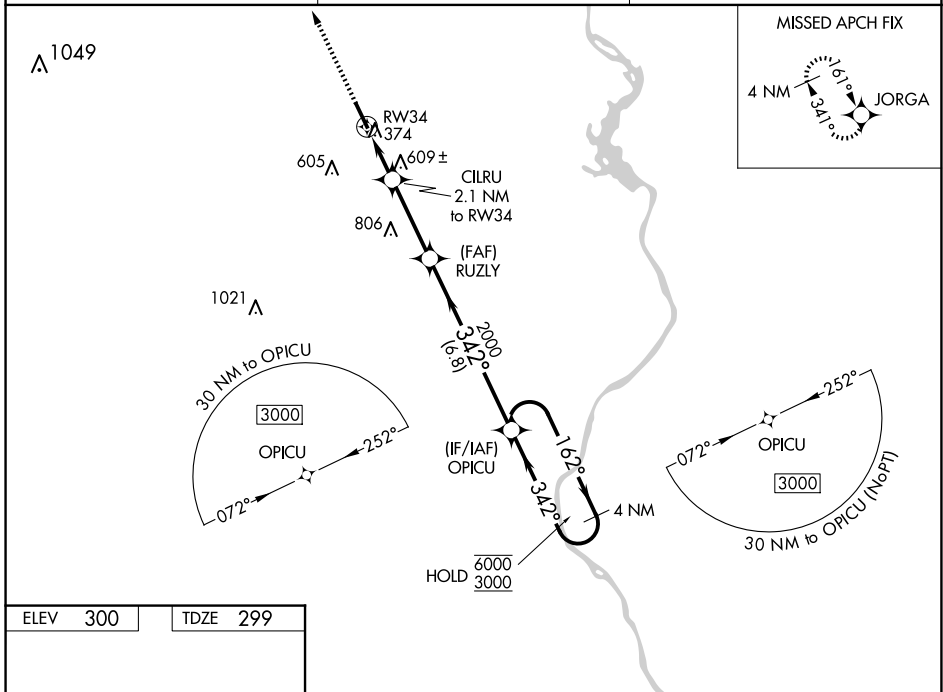
**⚠**  
For uncompensated Baro-VNAV systems, procedure NA below -15°C or above 42°C. Rwy 34 helicopter visibility reduction below ¾ SM NA.

MISSED APPROACH: Climb to 3000 direct JORGA and hold.

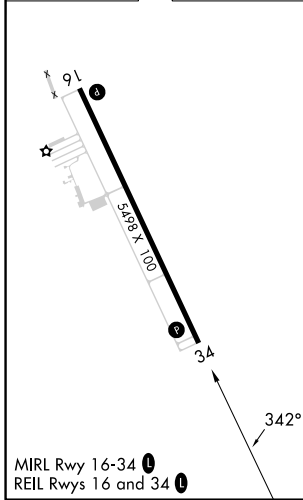
AWOS-3  
**119.325**

CHARLOTTE APP CON  
**120.05 307.8**

UNICOM  
**122.8 (CTAF) 0**



ELEV 300	TDZE 299
----------	----------



3000	JORGA	OPICU	4 NM Holding Pattern
↑	✧		
CILRU 2.1 NM to RW34	RUZLY	OPICU	
2000	2000	162° → 6000	← 342° 3000
1000	2000		GP 3.00° TCH 42
2.1 NM	3.1 NM	6.8 NM	
CATEGORY	A	B	C
LPV DA	649-1		350 (400-1)
LNAV/VNAV DA	957-1 7/8		658 (700-1 7/8)
LNAV MDA	860-1	561 (600-1)	860-1 5/8 561 (600-1 5/8)
CIRCLING	860-1	560 (600-1)	1080-2 1/4 780 (800-2 1/4) 1080-2 1/2 780 (800-2 1/2)

SE-2, 23 JAN 2025 to 20 FEB 2025

SE-2, 23 JAN 2025 to 20 FEB 2025