

SW-4, 23 JAN 2025 to 20 FEB 2025

**TOP ALTITUDE:  
ASSIGNED BY ATC**

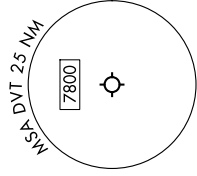
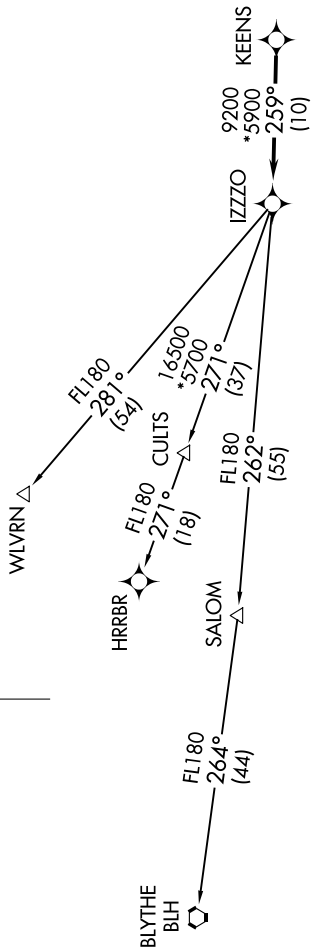
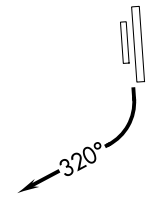
PHOENIX DEP CON  
120.7 239.0  
ATIS  
126.5  
CLINC DEL  
123.9  
GND CON  
121.8  
DEER VALLEY TOWER\*  
118.4 (Rwy 7R-25)  
120.2 (Rwy 7L-25R)

RNAV 1 - GPS.  
RADAR required.

- NOTE: Turbojets and turboprops only.
- NOTE: Aircraft requesting FL220 and below must file BLYTHE Transition.
- NOTE: Turbojets landing LAX, file WLVRN Transition.
- NOTE: Aircraft landing other than LAX and turboprops landing at LAX: Requesting FL240 and above, file HRRBR Transition.
- NOTE: Aircraft departing KGEU and KGYR ATC assigned only.

**TAKEOFF MINIMUMS**

Rwys 7L/R: NA - Obstacles.  
Rwys 25L/R: Standard with minimum climb of 370'/NM to 4600.



NOTE: Chart not to scale.

**DEPARTURE ROUTE DESCRIPTION**

**TAKEOFF RUNWAYS 25L/R:** Climbing right turn heading 320° or as assigned by ATC, thence . . . .  
 . . . .for RADAR vectors to KEENS, then on track 259° to IZZO, then on (transition).  
 Maintain ATC assigned altitude, expect filed altitude 3 minutes after departure.

- BLYTHE TRANSITION (IZZO8.BLH)
- HRRBR TRANSITION (IZZO8.HRRBR)
- WLVRN TRANSITION (IZZO8.WLVRN)

SW-4, 23 JAN 2025 to 20 FEB 2025