

LOC I-RGK 110.1	APP CRS 091°	Rwy Idg TDZE Apt Elev	5010 778 778
---------------------------	------------------------	-----------------------------	-----------------------------------------

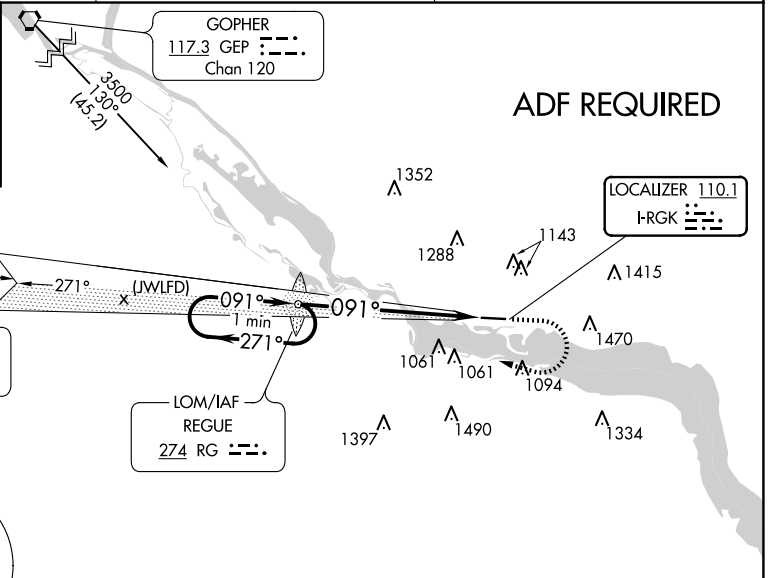
ILS or LOC RWY 9
RED WING RGNL (RGK)

ADF Required. When local altimeter setting not received, use South St. Paul altimeter setting; increase S-ILS 9 DA to 1050 feet; increase all MDA 80 feet and visibility S-LOC 9 Cat C/D 1/8 SM and Circling Cat B/C 1/4 SM. For inop MALSRS, increase S-LOC 9 Cat C/D visibility 1/4 mile. For inop MALSRS when using South St. Paul altimeter setting, increase S-ILS 9 all Cats visibility 3/8 mile, and S-LOC 9 Cat C/D visibility 3/4 mile.

MALSRS
MISSED APPROACH: Climb to 2000 then climbing right turn to 3000 direct REGUE LOM and hold.

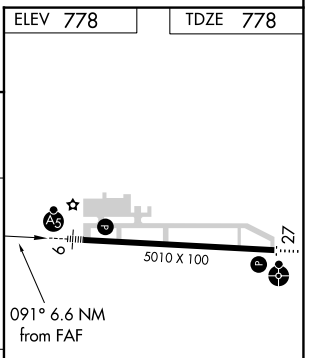
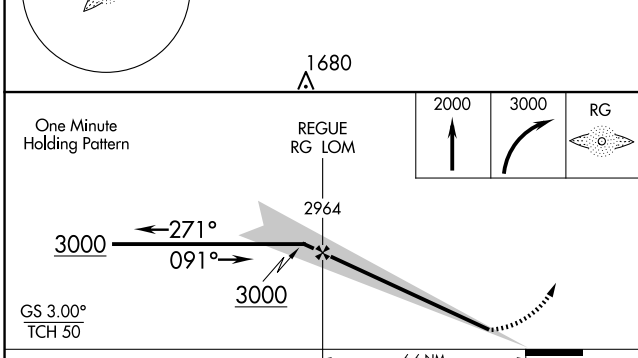
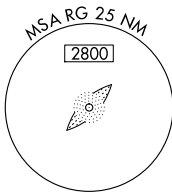
AWOS-3 119.25	MINNEAPOLIS APP CON 121.2 335.65	UNICOM 123.05 (CTAF)
-------------------------	--------------------------------------------	--------------------------------

ALTERNATE MISSED APCH FIX
FARMINGTON
115.7 FGT
Chan 104
265° R-085
085°



FARMINGTON
115.7 FGT
Chan 104

LOM/IAF REGUE
274 RG



CATEGORY	A	B	C	D
S-ILS 9	978-1/2		200 (200-1/2)	
S-LOC 9	1520-1/2 742 (800-1/2)	1520-3/4 742 (800-3/4)	1520-1 3/4 862 (900-2 1/2)	742 (800-1 3/4)
CIRCLING	1520-1	742 (800-1)	1640-2 1/2 862 (900-2 1/2)	1780-3 1002 (1100-3)

ELEV 778	TDZE 778				
HIRL Rwy 9-27					
FAF to MAP 6.6 NM					
Knots	60	90	120	150	180
Min:Sec	6:36	4:24	3:18	2:38	2:12

NC-1, 23 JAN 2025 to 20 FEB 2025

NC-1, 23 JAN 2025 to 20 FEB 2025