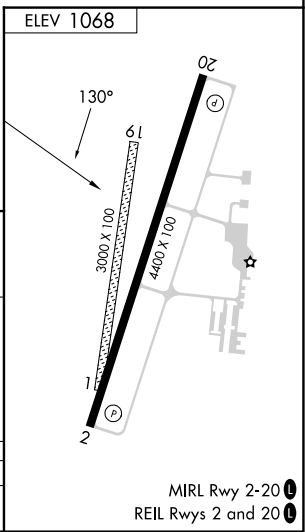
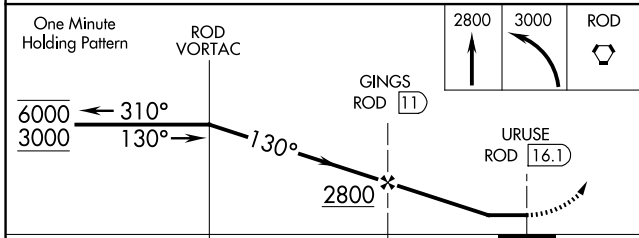
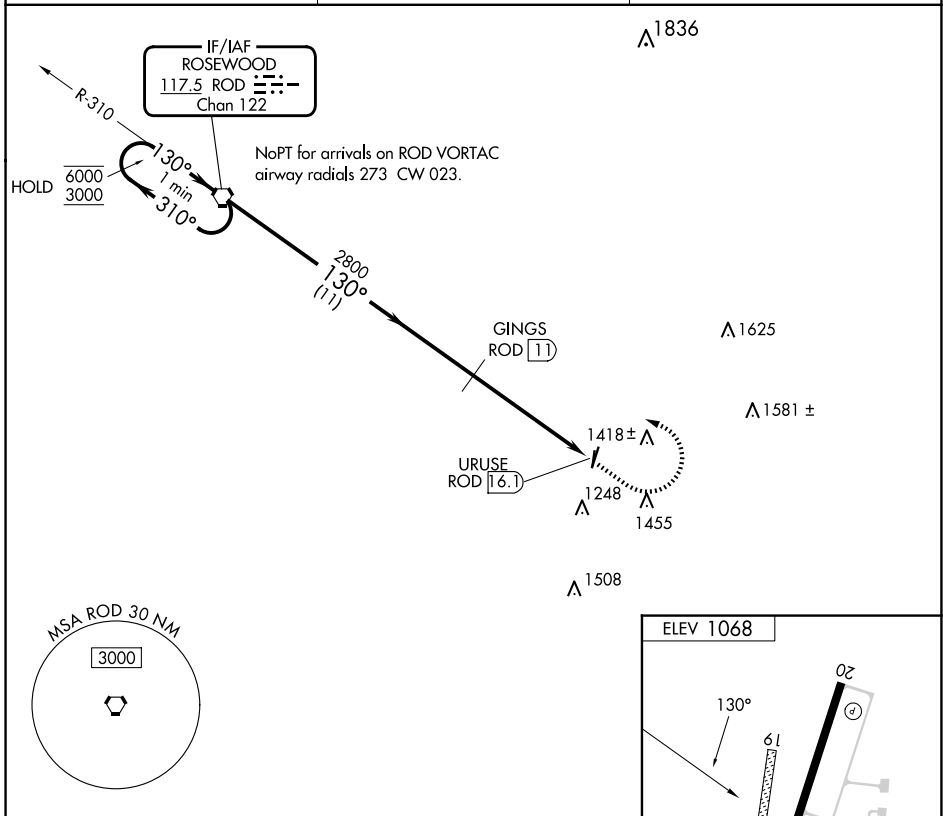


VORTAC ROD 117.5 Chan 122	APP CRS 130°	Rwy Idg TDZE Apt Elev 1068	N/A N/A
---	------------------------	--	--------------------------

VOR-A
GRIMES FLD (I74)

DME required.		MISSED APPROACH: Climb to 2800 then climbing left turn to 3000 direct ROD VORTAC and hold.
<p>⚠ Circling NA to Rwy 1 and 19. When local altimeter setting not received, use Springfield altimeter setting and increase all MDAs 60 feet and Cat C visibility ¼ SM.</p>		
AWOS-3 118.325	COLUMBUS APP CON 134.45 294.5	UNICOM 122.7 (CTAF) 📻



CATEGORY	A	B	C	D
📻 CIRCLING	1580-1 512 (600-1)	1780-1 712 (800-1)	1800-2 732 (800-2)	NA

MIRL Rwy 2-20 **📻**
REIL Rwy 2 and 20 **📻**

EC-2, 23 JAN 2025 to 20 FEB 2025

EC-2, 23 JAN 2025 to 20 FEB 2025