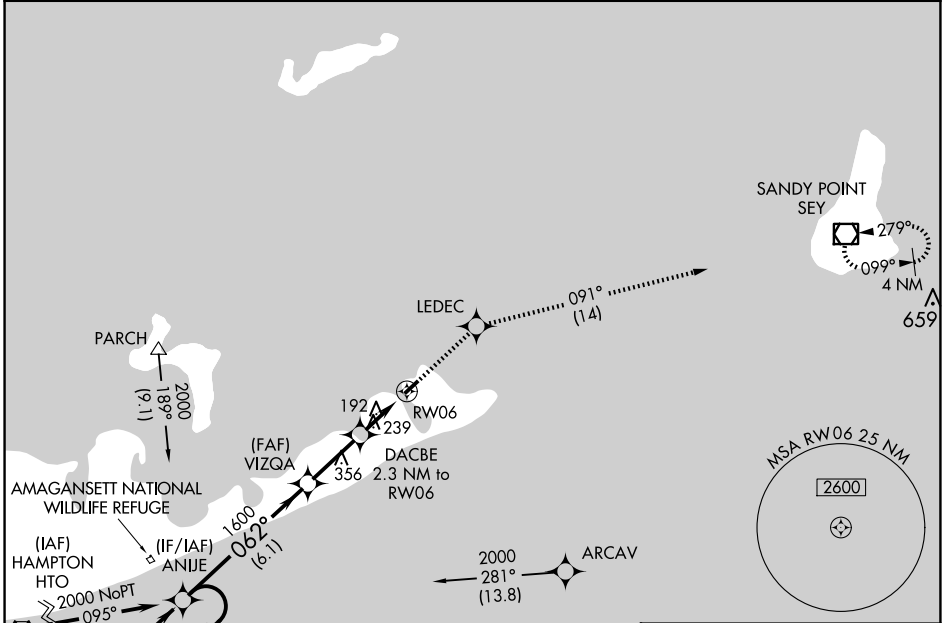


APP CRS	Rwy Idg	<b>2944</b>
<b>062°</b>	TDZE	<b>6</b>
	Apt Elev	<b>7</b>

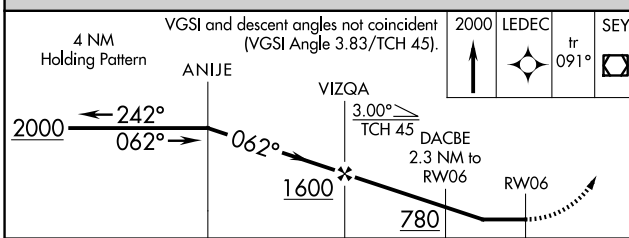
# RNAV (GPS) RWY 6

MONTAUK (MTP)

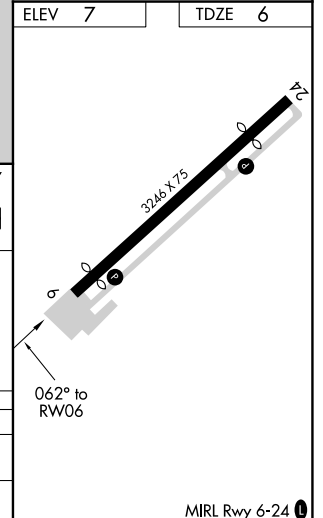
RNP APCH - GPS.			MISSED APPROACH: Climb to 2000 direct LEDEC and on track 091° to SEY VOR/DME and hold.
<p>▼ Use Graton-New London altimeter setting; when not received, use Block Island State altimeter setting; increase all MDA 20 feet and visibility LNAV Cats C and D ½ SM and Circling Cat D ¼ SM. Procedure NA at night. Helicopter visibility reduction below 1 SM NA.</p> <p>▲ NA</p>			
GON ASOS <b>127.0</b>	NEW YORK APP CON <b>125.975 343.65</b>	UNICOM <b>122.7 (CTAF)</b>	<b>121.7 0</b>



Procedure NA for arrivals on HTO VORTAC airway radials 039 CW 079.



CATEGORY	A	B	C	D
LNAV MDA	540-1	534 (600-1)	540-1½	534 (600-1½)
CIRCLING	580-1	573 (600-1)	580-1½ 573 (600-1½)	740-2¼ 733 (800-2¼)



NE-2, 23 JAN 2025 to 20 FEB 2025

NE-2, 23 JAN 2025 to 20 FEB 2025