

QUINCY, FLORIDA

AL-6775 (FAA)

23222

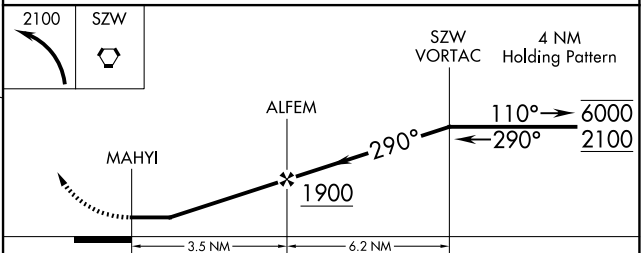
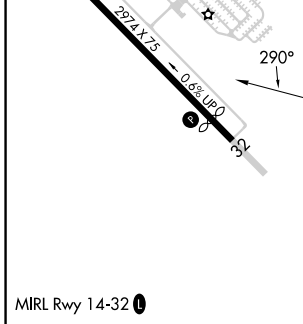
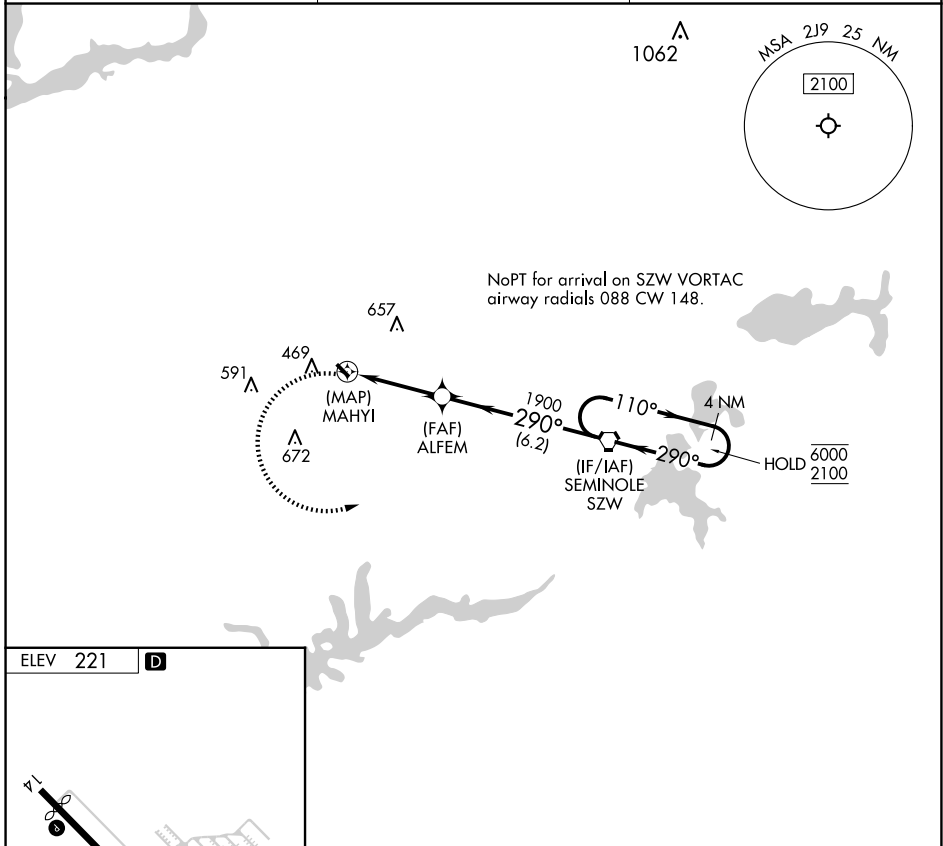
WAAS CH <b>40045</b> <b>W20A</b>	APP CRS <b>290°</b>	Rwy Idg TDZE Apt Elev <b>221</b>	<b>N/A</b> <b>N/A</b> <b>221</b>
--	------------------------	---	--

# RNAV (GPS)-A

QUINCY MUNI (2J9)

RNP APCH-GPS.	MISSED APPROACH: Climbing left turn to 2100 direct SZW VORTAC and hold.
<p>▼ Procedure NA at night.</p> <p>▲ Rwy 14, 32 helicopter visibility reduction below 1 SM NA.</p>	

AWOS-3PT <b>118.975</b>	TALLAHASSEE APP CON ★ <b>128.7 254.3</b>	UNICOM <b>122.7 (CTAF) 0</b>
----------------------------	---	---------------------------------



CATEGORY	A	B	C	D
<b>C</b> CIRCLING	780-1	559 (600-1)		NA

QUINCY, FLORIDA  
Orig 07OCT21

30°36'N-84°33'W

# QUINCY MUNI (2J9)

## RNAV (GPS)-A

SE-3, 23 JAN 2025 to 20 FEB 2025

SE-3, 23 JAN 2025 to 20 FEB 2025