

WAAS CH 77946 W08A	APP CRS 075°	Rwy Idg TDZE Apt Elev	5003 301 309
--	------------------------	-----------------------------	---

RNAV (GPS) RWY 8

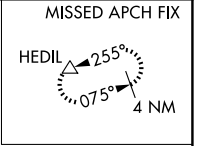
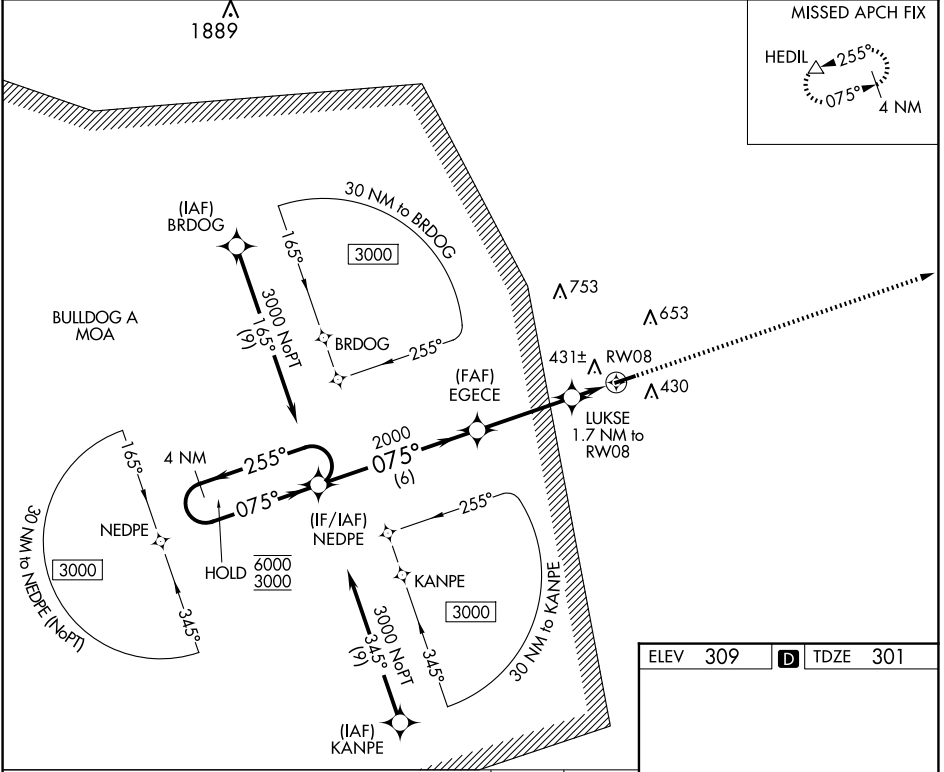
BURKE COUNTY (BXXG)

RNP APCH-GPS.

▼ Rwy 8 helicopter visibility reduction below 3/4 SM NA.
▲ NA Baro-VNAV NA. Use AGS altimeter setting.

MISSED APPROACH: Climb to 2000 direct HEDIL and hold.

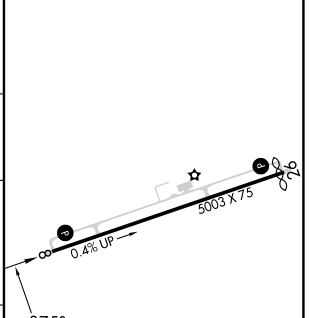
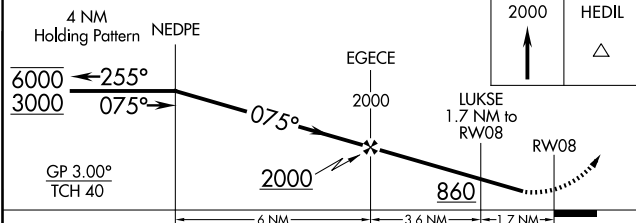
AGS ASOS 132.75	AUGUSTA APP CON * 126.8 270.3	CTAF 122.90
---------------------------	---	-----------------------



SE-4, 23 JAN 2025 to 20 FEB 2025

SE-4, 23 JAN 2025 to 20 FEB 2025

ELEV 309	D TDZE 301
----------	-------------------



CATEGORY	A	B	C	D
LPV DA		698-1 1/8	397 (400-1 1/8)	
LNAV/VNAV DA		782-1 3/8	481 (500-1 1/8)	
LNAV MDA	760-1	459 (500-1)	760-1 3/8	459 (500-1 1/8)
CIRCLING	820-1 511 (600-1)	900-1 591 (600-1)	1080-2 1/4 771 (800-2 1/4)	1180-2 3/4 871 (900-2 3/4)

REIL Rwy 8 **0**
MIRL Rwy 8-26 **0**