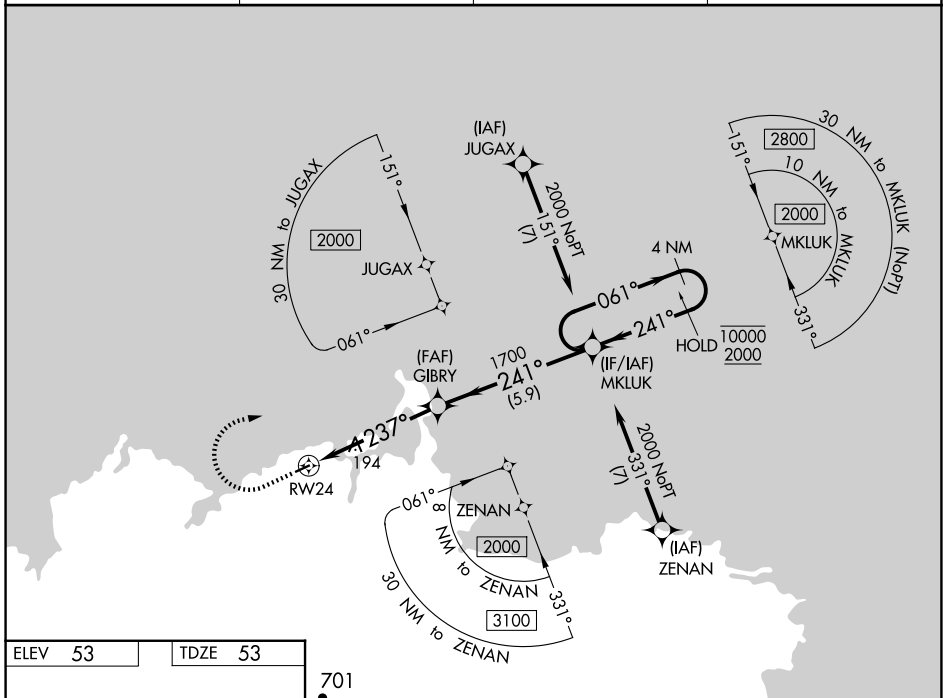


WAAS CH 82743 W24A	APP CRS 237°	Rwy Idg TDZE Apt Elev	3001 53 53
--	------------------------	-----------------------------	---------------------------------------

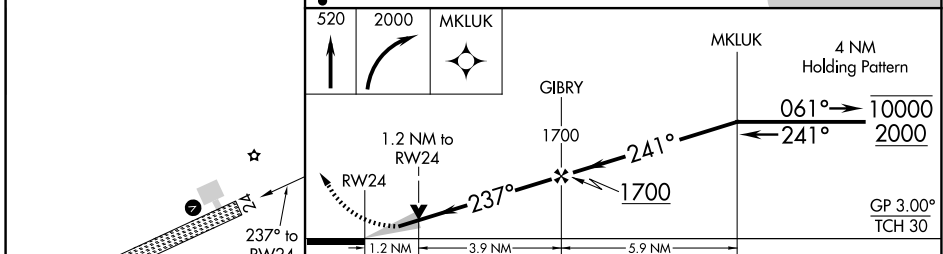
RNAV (GPS) RWY 24

MEKORYUK (MYU) (PAMY)

RNP APCH-GPS.		MISSED APPROACH: Climb to 520 then climbing right turn to 2000 direct MKLUK and hold.	
Circling NA southeast of Rwy 6-24.		AWOS-3P 123.9	ANCHORAGE CENTER 124.5 372.0
		KENAI RADIO 122.0	CTAF 122.9 0



ELEV 53	TDZE 53
---------	---------



CATEGORY	A	B	C	D
LPV DA		303-1	250 (300-1)	
LNAV/VNAV DA		303-1	250 (300-1)	
LNAV MDA	460-1	407 (500-1)	460-1½	407 (500-1½)
CIRCLING	460-1 407 (500-1)	640-1 587 (600-1)	660-1¾ 607 (700-1¾)	860-2½ 807 (900-2½)

AK, 26 DEC 2024 to 20 FEB 2025

AK, 26 DEC 2024 to 20 FEB 2025