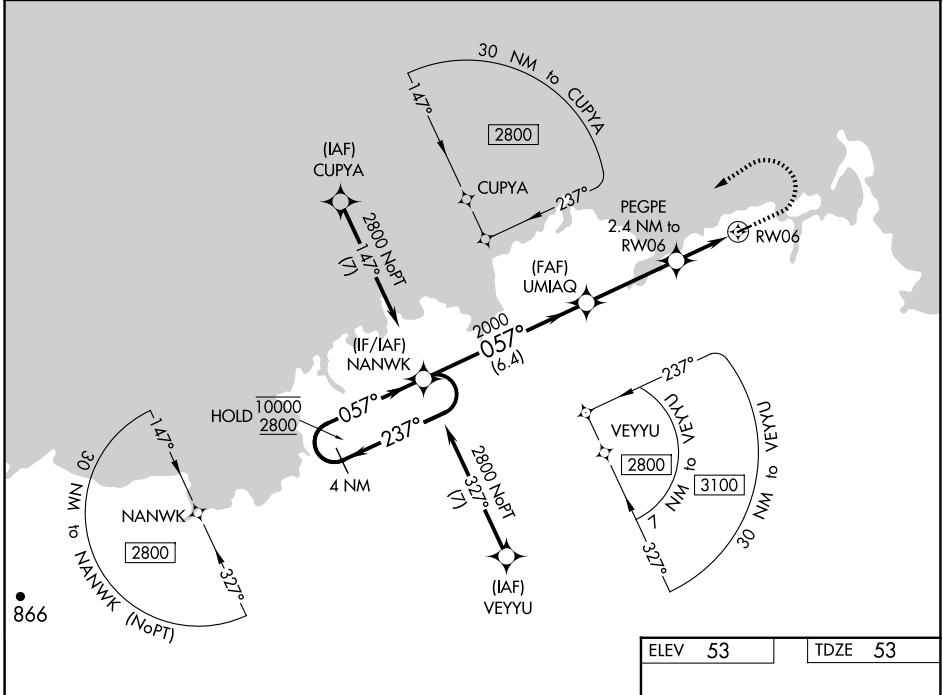


WAAS CH 78443 W06A	APP CRS 057°	Rwy Idg TDZE Apt Elev	3001 53 53
--	------------------------	-----------------------------	---------------------------------------

RNAV (GPS) RWY 6

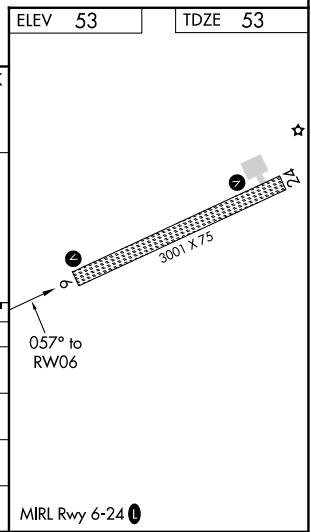
MEKORYUK (MYU) (PAMY)

RNP APCH-GPS.		MISSED APPROACH: Climb to 700 then climbing left turn to 2800 direct NANWK and hold.	
Circling NA southeast of Rwy 6-24.		AWOS-3P 123.9	ANCHORAGE CENTER 124.5 372.0
		KENAI RADIO 122.0	CTAF 122.9 0



VGSI and RNAV glidepath not coincident (VGSI Angle 3.00/TCH 28).

4 NM Holding Pattern	NANWK	UMIAQ	PEGPE	RW06
10000 2800	2000	2000	2.4 NM to RW06	1.6 NM to RW06
GP 3.00° TCH 40	057°	057°	0.8	1.6 NM
	6.4 NM	3.6 NM		
CATEGORY	A	B	C	D
LPV DA		303-1	250 (300-1)	
LNAV/VNAV DA		303-1	250 (300-1)	
LNAV MDA	580-1	527 (600-1)	580-1½	527 (600-1½)
CIRCLING	580-1 527 (600-1)	640-1 587 (600-1)	660-1¾ 607 (700-1¾)	860-2½ 807 (900-2½)



AK, 26 DEC 2024 to 20 FEB 2025

AK, 26 DEC 2024 to 20 FEB 2025