

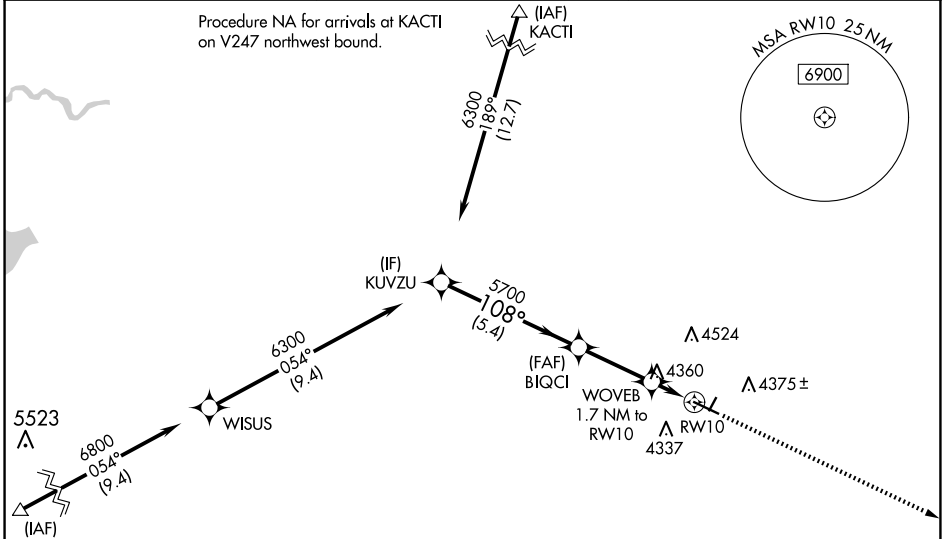
WAAS CH 61344 W10A	APP CRS 108°	Rwy Idg 5703 TDZE 4207 Apt Elev 4207
--	------------------------	---

RNAV (GPS) RWY 10

TORRINGTON MUNI (TOR)

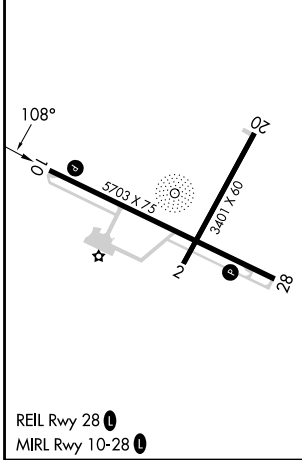
RNP APCH - GPS.	MISSED APPROACH: Climb to 6200 direct CIKSI and hold.
<p>▼ For uncompensated Baro-VNAV systems, LNAV/VNAV NA below -26°C or above 54°C.</p>	

ASOS 118.375	DENVER CENTER 127.95 338.2	UNICOM 122.8 (CTAF) 0
------------------------	--------------------------------------	---------------------------------



Procedure NA for arrivals at HOCCXU on V547 southeast bound.

ELEV 4207	TDZE 4207
-----------	-----------



KUVZU 6300	BIQCI 5700	WOVEB 1.7 NM to RW10	RW10	6200	CIKSI
GP 3.00° TCH 40					
				5.4 NM	2.9 NM
				1.7 NM	
CATEGORY	A	B	C	D	
LPV DA		4457-1	250 (300-1)		
LNAV/VNAV DA		4468-1	261 (300-1)		
LNAV MDA	4660-1	453 (500-1)	4660-1 3/8	453 (500-1 3/8)	
CIRCLING	4740-1	533 (600-1)	4880-2 673 (700-2)	4960-2 1/2 753 (800-2 1/2)	

NW-1, 23 JAN 2025 to 20 FEB 2025

NW-1, 23 JAN 2025 to 20 FEB 2025