

WAAS CH <b>66044</b> <b>W28A</b>	APP CRS <b>289°</b>	Rwy Idg <b>5703</b> TDZE <b>4202</b> Apt Elev <b>4207</b>
--	------------------------	---

# RNAV (GPS) RWY 28

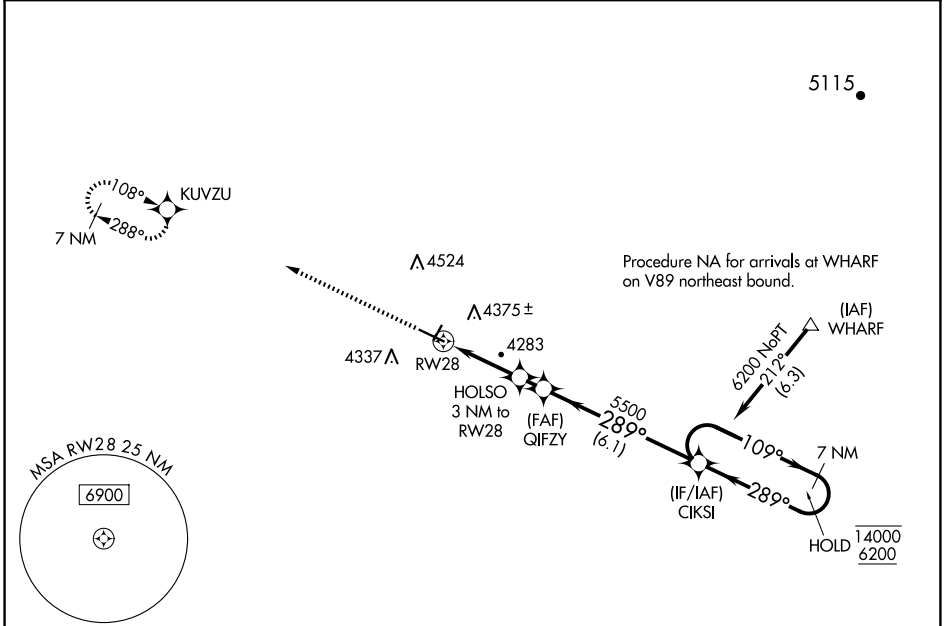
TORRINGTON MUNI (TOR)

RNP APCH - GPS.

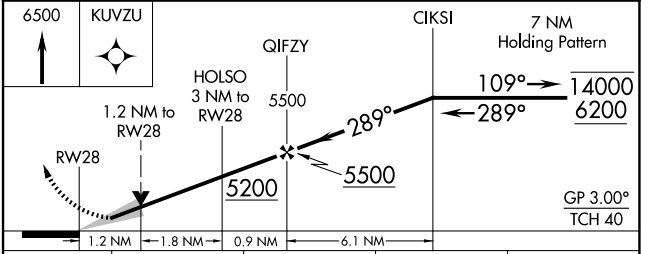
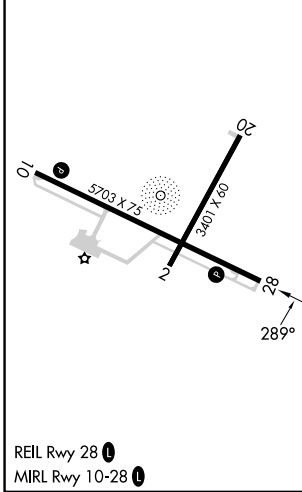
▼ For uncompensated Baro-VNAV systems, LNAV/VNAV  
▲ NA below -26°C or above 54°C.

MISSED APPROACH: Climb to 6500 direct KUVZU and hold.

ASOS <b>118.375</b>	DENVER CENTER <b>127.95 338.2</b>	UNICOM <b>122.8 (CTAF) 0</b>
------------------------	--------------------------------------	---------------------------------



ELEV <b>4207</b>	TDZE <b>4202</b>
------------------	------------------



CATEGORY	A	B	C	D
LPV DA	4452- <sup>3</sup> / <sub>4</sub> 250 (300- <sup>3</sup> / <sub>4</sub> )			
LNAV/VNAV DA	4560-1 358 (400-1)			
LNAV MDA	4620-1	418 (500-1)	4620-1 <sup>1</sup> / <sub>8</sub>	418 (500-1 <sup>1</sup> / <sub>8</sub> )
CIRCLING	4740-1	533 (600-1)	4880-2 673 (700-2)	4960-2 <sup>1</sup> / <sub>2</sub> 753 (800-2 <sup>1</sup> / <sub>2</sub> )

NW-1, 23 JAN 2025 to 20 FEB 2025

NW-1, 23 JAN 2025 to 20 FEB 2025