

WAAS CH 78022 W05B	APP CRS 052°	Rwy Idg 11004 TDZE 744 Apt Elev 744
----------------------------------------	------------------------	----------------------------------------------------------------

RNAV (GPS) RWY 5L

RICKENBACKER INTL (LCK)

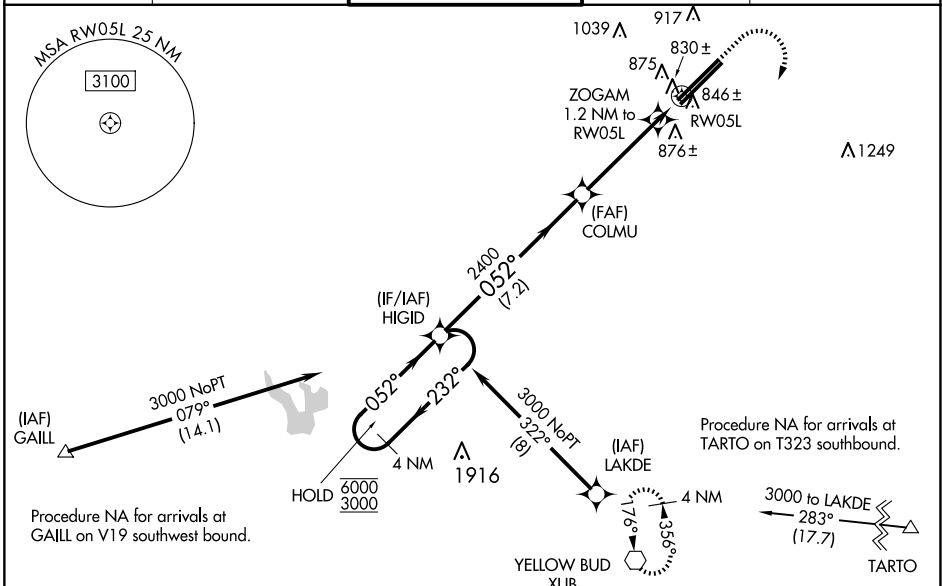
RNP APCH - GPS.

⚠ Circling NA northwest of Rwy 5L-23R. For uncompensated Baro-VNAV systems, LNAV/VNAV NA below -16°C or above 54°C. Baro-VNAV NA when using John Glenn Columbus Intl altimeter setting. When local altimeter setting not received, use John Glenn Columbus Intl altimeter setting: increase LPV DA to 979 feet; increase LNAV/VNAV DA to 1042 feet; increase all MDAs 40 feet and Circling visibility Cat D ¼ SM.

MALSRL

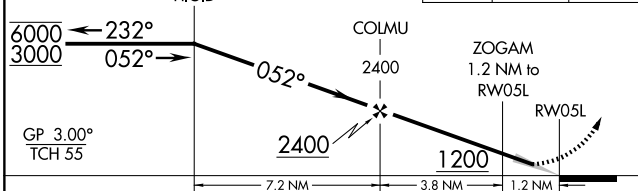
MISSED APPROACH: Climb to 1500 then climbing right turn to 3000 direct XUB VOR and hold.

ATIS 132.75	COLUMBUS APP CON 134.0 279.6	RICK TOWER 120.05 348.4	GND CON 125.275 275.8	CLNC DEL 125.275 275.8
-----------------------	----------------------------------------	-----------------------------------	---------------------------------	----------------------------------

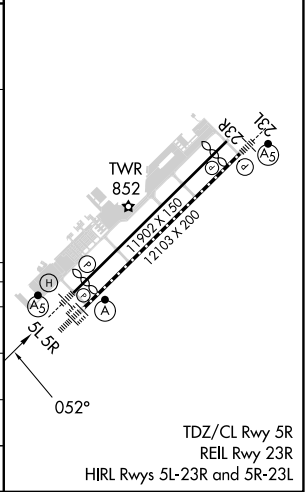


ELEV 744	D TDZE 744
----------	-------------------

VGSI and RNAV glidepath not coincident (VGSI Angle 3.00/TCH 70).
4 NM Holding Pattern



CATEGORY	A	B	C	D
LPV DA		944-1/2	200 (200-1/2)	
LNAV/VNAV DA		1007-1/2	263 (300-1/2)	
LNAV MDA	1100-1/2	356 (400-1/2)	1100-5/8	356 (400-5/8)
CIRCLING	1240-1	496 (500-1)	1280-1 1/2 536 (600-1 1/2)	1400-2 656 (700-2)



EC-2, 23 JAN 2025 to 20 FEB 2025

EC-2, 23 JAN 2025 to 20 FEB 2025