

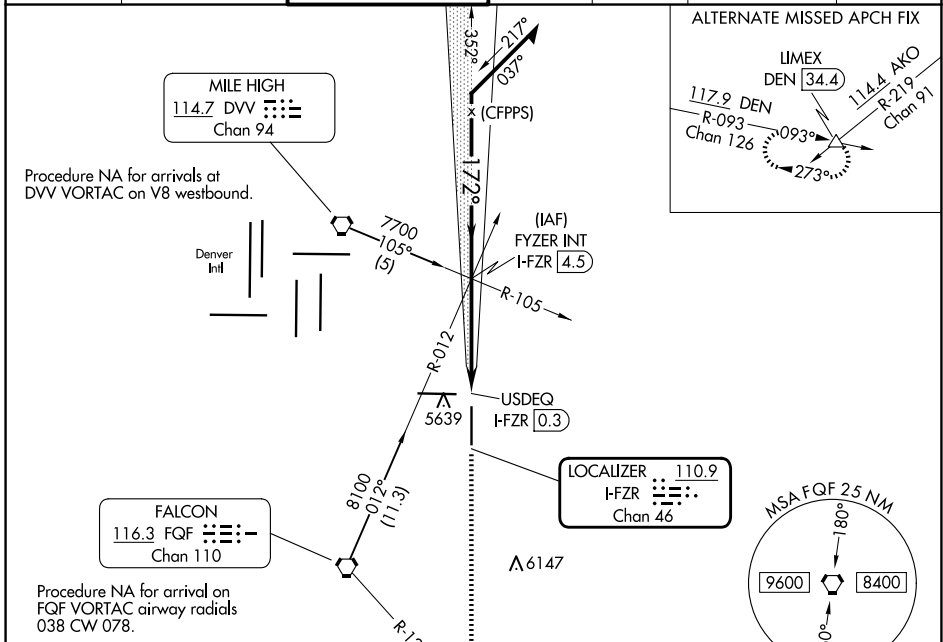
LOC/DME I-FZR <b>110.9</b> Chan 46	APP CRS <b>172°</b>	Rwy Idg TDZE Apt Elev	<b>8000</b> <b>5491</b> <b>5515</b>
--	------------------------	-----------------------------	---

# ILS or LOC RWY 17

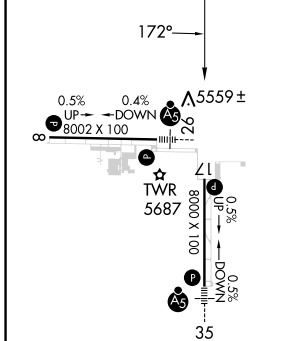
COLORADO AIR AND SPACE PORT (CFO)

**MISSED APPROACH:** Climb to 8500 on heading 172° and FQG VORTAC R-127 to HUNTN INT/FQG 9.8 DME and hold.

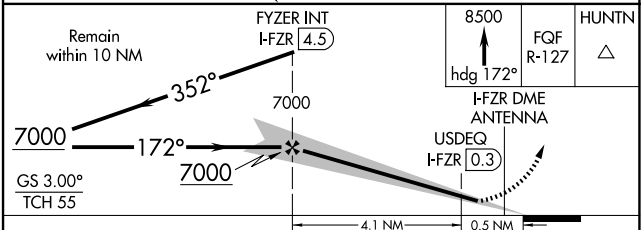
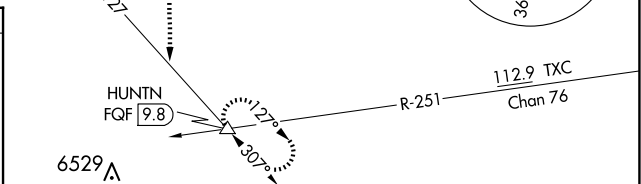
ATIS <b>119.025</b>	DENVER APP CON <b>128.25 371.95</b>	SPACE PORT TOWER ★ <b>120.2 (CTAF)</b>	GND CON <b>124.7</b>	CLNC DEL <b>124.7</b>	CLNC DEL <b>121.75</b> (When twr closed)	UNICOM <b>122.95</b>
------------------------	--	---	-------------------------	--------------------------	--	-------------------------



ELEV 5515	TDZE 5491
-----------	-----------



FAF to MAP 4.1 NM					
Knots	60	90	120	150	180
Min:Sec	4:06	2:44	2:03	1:38	1:22



CATEGORY	A	B	C	D
S-ILS 17	5691-3/4 200 (200-3/4)			
S-LOC 17	5820-1 329 (400-1)			
<input checked="" type="checkbox"/> CIRCLING	6000-1	485 (500-1)	6100-1 1/2 585 (600-1 1/2)	6300-2 1/2 785 (800-2 1/2)

SW-1, 23 JAN 2025 to 20 FEB 2025

SW-1, 23 JAN 2025 to 20 FEB 2025