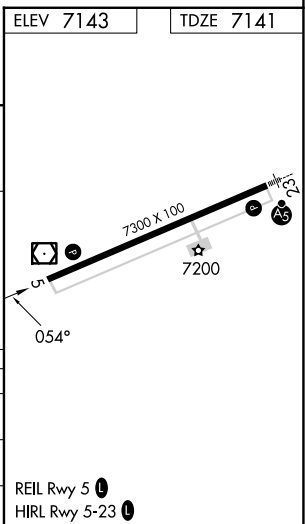
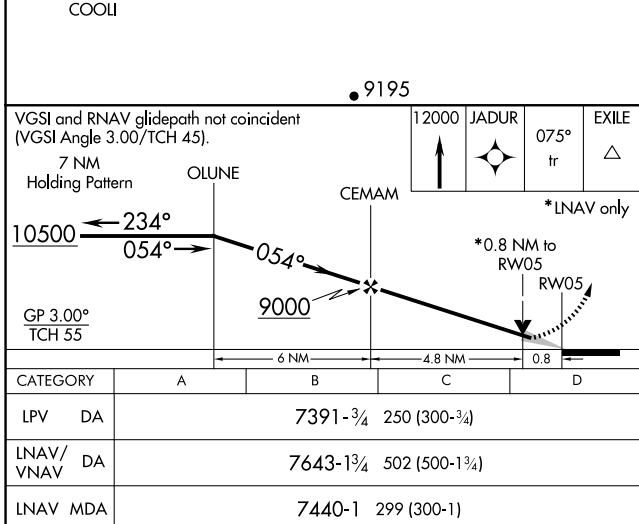
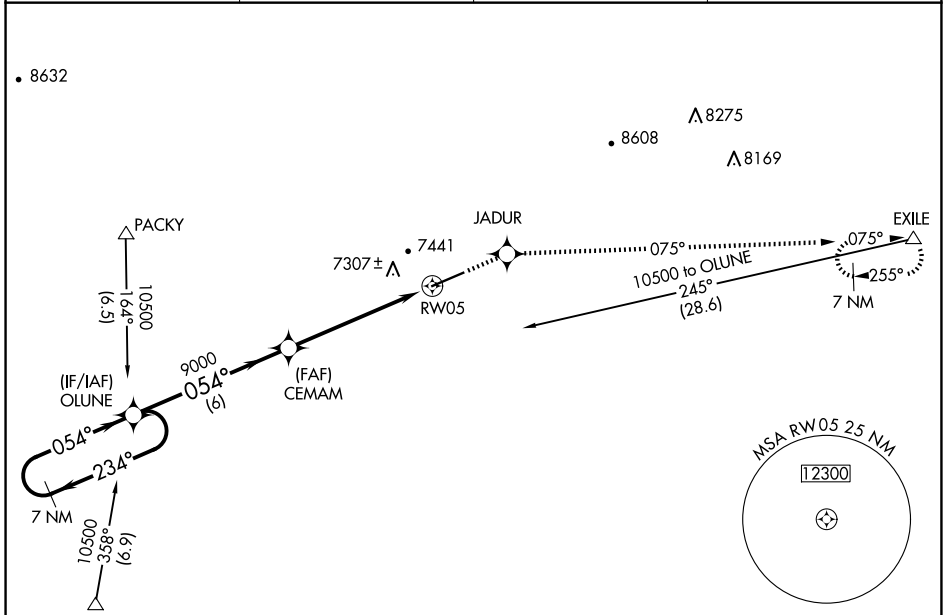


WAAS CH 78302 W05A	APP CRS 054°	Rwy Idg TDZE Apt Elev	7300 7141 7143
--	------------------------	-----------------------------	---

RNAV (GPS) RWY 5

EVANSTON-UINTA COUNTY BURNS FLD (E V W)

RNP APCH. ▼ If local altimeter setting not received, procedure NA. For uncompensated Baro-VNAV systems, LNAV/VNAV NA below -29°C (-20°F) or above 34°C (94°F).		MISSED APPROACH: Climb to 12000 direct JADUR and via 075° track to EXILE and hold, continue climb-in-hold to 12000.	
ASOS 120.0	SALT LAKE CENTER 127.7 354.125	GCO 121.72	UNICOM 123.0 (CTAF) 0



NW-1, 23 JAN 2025 to 20 FEB 2025

NW-1, 23 JAN 2025 to 20 FEB 2025