

WAAS CH 53608 W17A	APP CRS 173°	Rwy Idg 4605 TDZE 1827 Apt Elev 1827
----------------------------------------	------------------------	-----------------------------------------------------------------

RNAV (GPS) RWY 17

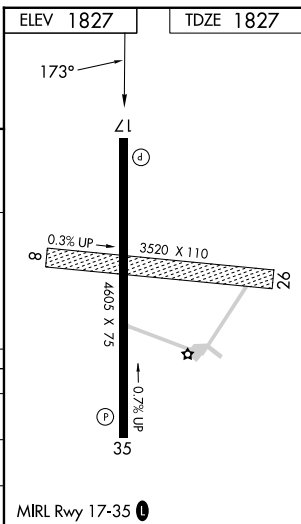
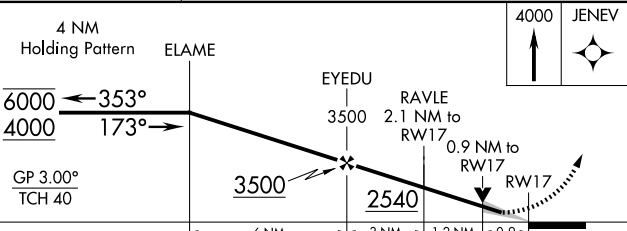
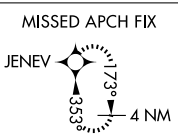
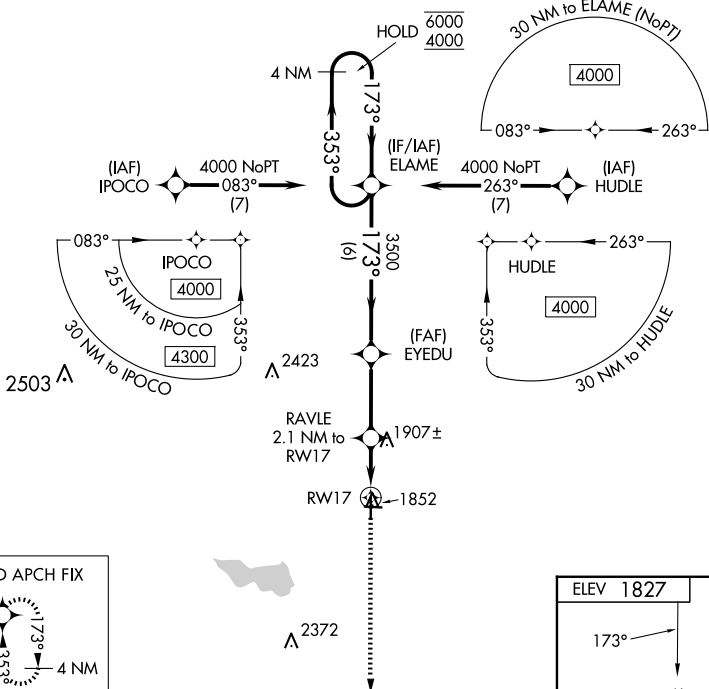
CURTIS FLD (BBD)

RNP APCH - GPS.

▼ For uncompensated Baro-VNAV systems, LNAV/VNAV NA below -18°C or above 54°C.
 ▲ Baro-VNAV and VDP NA when using JCT altimeter setting. When local altimeter setting not received, use JCT altimeter setting: increase LPV DA to 2144 feet; increase LNAV/VNAV DA to 2194 feet; increase all MDAs 120 feet and LNAV visibility Cat C 3/8 SM.

MISSED APPROACH: Climb to 4000 direct JENEV and hold.

AWOS-3 118.375	HOUSTON CENTER 132.35 317.5	UNICOM 122.8 (CTAF) 0
--------------------------	---------------------------------------	---------------------------------



CATEGORY	A	B	C	D
LPV DA	2027-1	200 (200-1)		NA
LNAV/VNAV DA	2077-1	250 (300-1)		NA
LNAV MDA	2160-1	333 (400-1)		NA

SC-3, 23 JAN 2025 to 20 FEB 2025

SC-3, 23 JAN 2025 to 20 FEB 2025