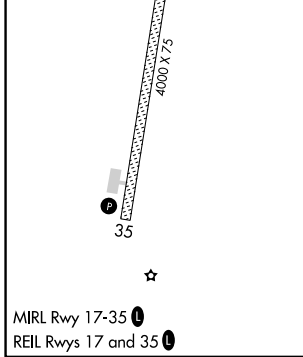
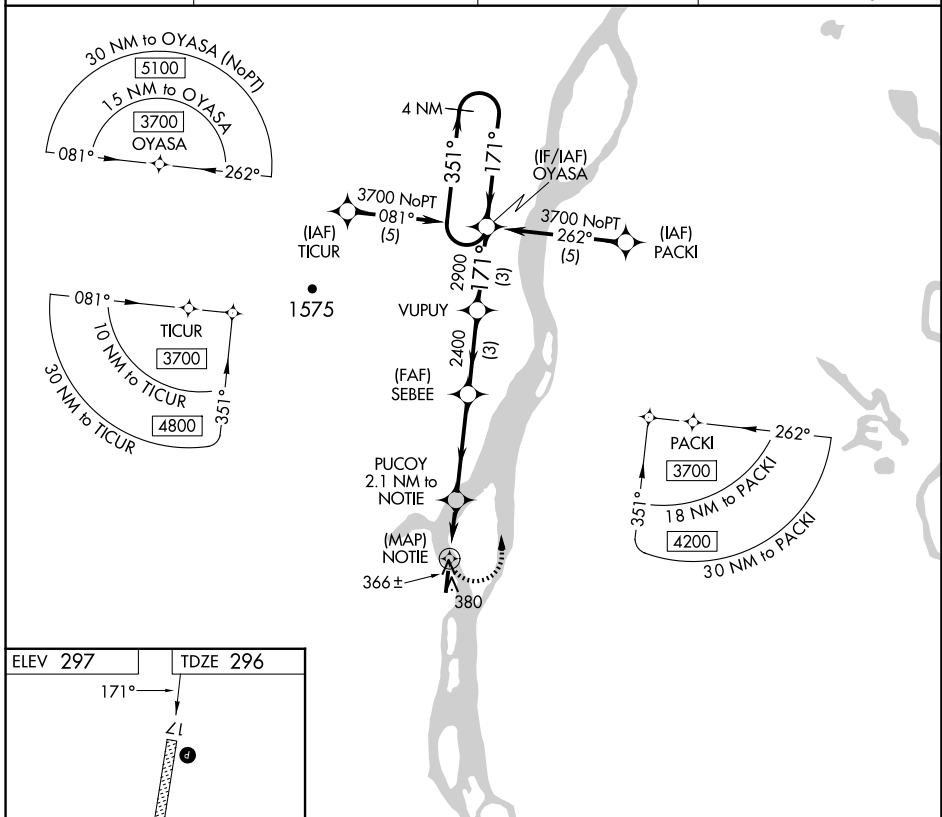


APP CRS	Rwy Idg	4000
171°	TDZE	296
	Apt Elev	297

RNAV (GPS) RWY 17

ANVIK (ANV)(PANV)

RNP APCH - GPS.		MISSED APPROACH: Climbing left turn to 3700 direct OYASA and hold, continue climb-in-hold to 3700.	
Rwy 17 helicopter visibility reduction below 3/4 SM NA.			
AWOS-3P	ANCHORAGE CENTER	KENAI RADIO	UNICOM
133.55	135.7 335.5	122.4	122.7 (CTAF) 0



3700	OYASA	VGSi and descent angles not coincident (VGSi Angle 3.00/TCH 25).			
		PUCOY	SEBEE	VUPLY	OYASA
		2.1 NM to NOTIE			4 NM Holding Pattern
		1140	2400	2900	3700
		0.5	2.1 NM	3.8 NM	3 NM
CATEGORY	A	B	C	D	
LNAV MDA	700-1	404 (500-1)	700-1 1/4	404 (500-1 1/4)	
CIRCLING	840-1	543 (600-1)	840-1 1/2	860-2	
			543 (600-1 1/2)	563 (600-2)	

AK, 26 DEC 2024 to 20 FEB 2025

AK, 26 DEC 2024 to 20 FEB 2025