

| | | |
|--|------------------------|---|
| WAAS CH 86702 W16A | APP CRS 163° | Rwy ldg TDZE 16 Apt Elev 16 |
|--|------------------------|---|

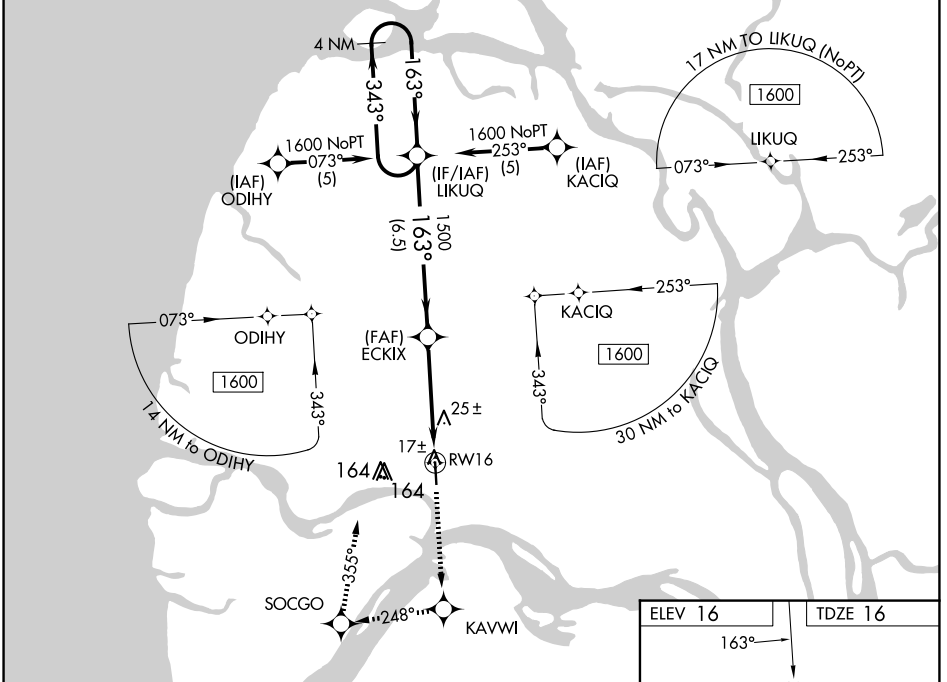
RNAV (GPS) RWY 16

EMMONAK (ENM) (PAEM)

⚠ If local altimeter setting not received, use St Mary's altimeter setting and increase all DAs 168 feet and all MDAs 180 feet. VDP NA with St Mary's altimeter setting. DME/DME RNP: 0.3 NA. Baro-VNAV NA when using St Mary's altimeter setting. For uncompensated Baro-VNAV systems, LNAV/VNAV NA below -25°C (-13°F) or above 48°C (119°F).

MISSED APPROACH: Climb to 1600 direct KAVWI and right turn via 248° track to SOCGO and right turn via 355° track to LIKUQ and hold.

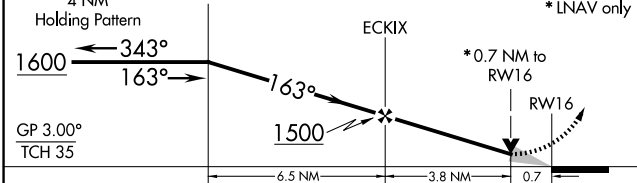
| | | |
|--------------------------|----------------------------------|------------------------|
| AWOS-3P 135.35 | ANCHORAGE CENTER 124.0 | CTAF 122.9 0 |
|--------------------------|----------------------------------|------------------------|



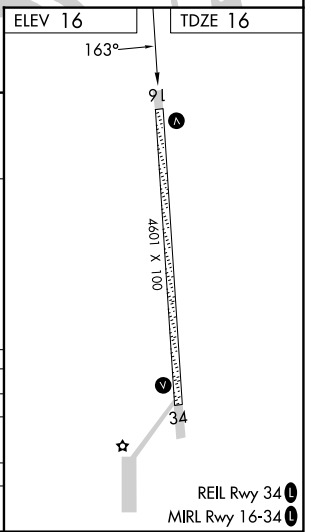
VGSI and RNAV glidepath not coincident (VGSI Angle 3.00/TCH 32).

| | | | |
|------|-------|-----------|-----------|
| 1600 | KAVWI | SOCGO | LIKUQ |
| ↑ | ◆ | ↪ tr 248° | ↪ tr 355° |

* LNAV only



| CATEGORY | A | B | C | D |
|--------------|-------|-------------|------------------------|----------------------|
| LPV DA | | 266-1 | 250 (300-1) | |
| LNAV/VNAV DA | | 280-1 | 264 (300-1) | |
| LNAV MDA | | 280-1 | 264 (300-1) | |
| CIRCLING | 520-1 | 504 (600-1) | 520-1½ 504 (600-1½) | 580-2 564 (600-2) |



AK, 26 DEC 2024 to 20 FEB 2025

AK, 26 DEC 2024 to 20 FEB 2025