

VOR/DME ENM <b>117.8</b> Chan 125	APP CRS <b>159°</b>	Rwy Idg TDZE Apt Elev	<b>4601</b> <b>16</b> <b>16</b>
---	------------------------	-----------------------------	---------------------------------------

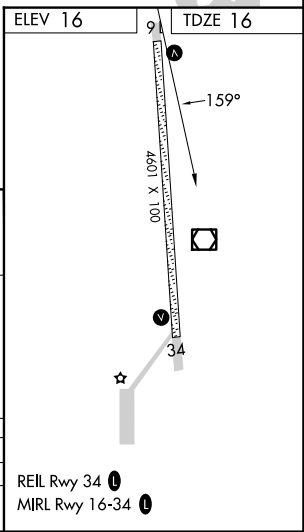
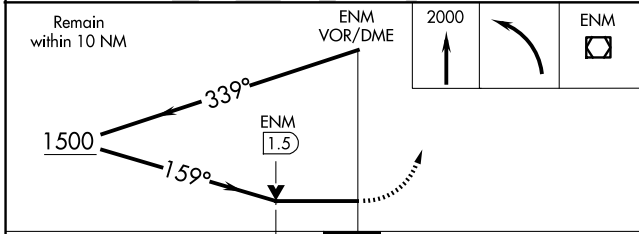
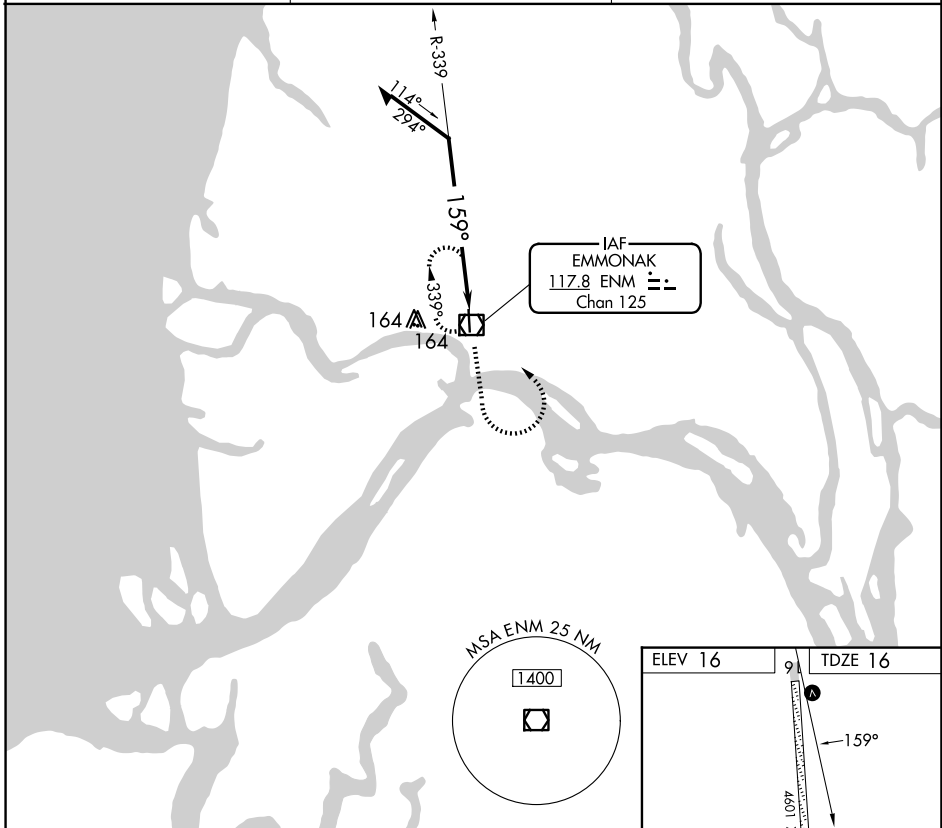
# VOR RWY 16

EMMONAK (ENM) (PAEM)

**⚠** If local altimeter setting not received, use St. Mary's altimeter setting and increase all MDAs 180 feet.  
VDP not authorized with St. Mary's altimeter setting.

MISSED APPROACH: Climb to 2000 then left turn direct ENM VOR/DME and hold.

AWOS-3P <b>135.35</b>	ANCHORAGE CENTER <b>124.0</b>	CTAF <b>122.9</b>
--------------------------	----------------------------------	----------------------



CATEGORY	A	B	C	D
S-16		340-1	324 (400-1)	
CIRCLING	520-1	504 (600-1)	520-1½ 504 (600-1½)	580-2 564 (600-2)

AK, 26 DEC 2024 to 20 FEB 2025

AK, 26 DEC 2024 to 20 FEB 2025