

LOC/DME I-TEX 109.3 Chan 30	APP CRS 093°	Rwy Idg 6911 TDZE 9037 Apt Elev 9070
--	------------------------	---

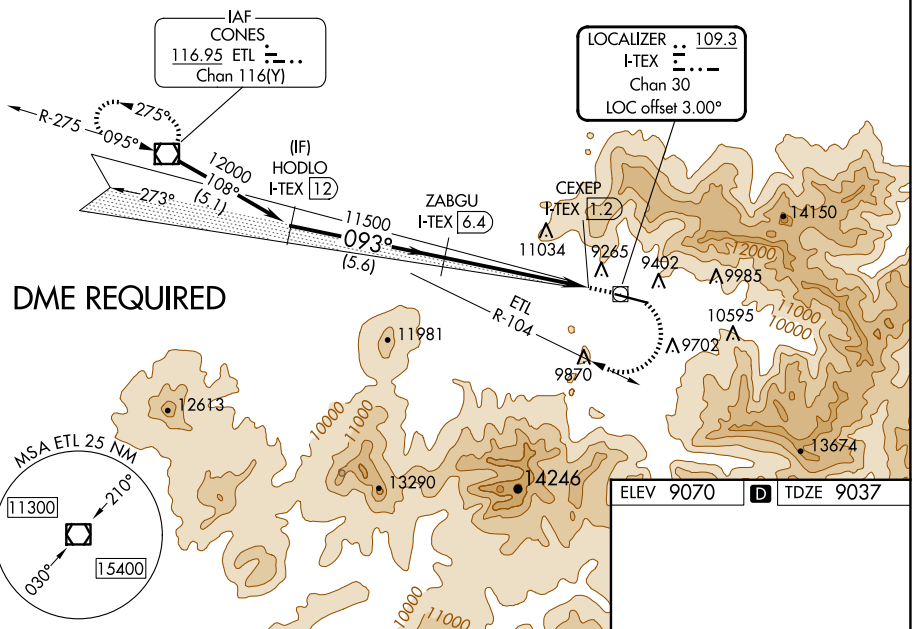
LOC RWY 9

TELLURIDE RGNL (TEX)

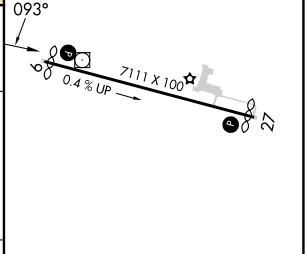
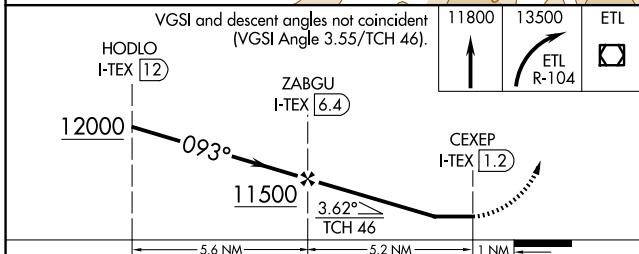
<p> Circling NA north of Rwy 9-27. Circling NA at night. DME required. </p>	<p> MISSED APPROACH: Climb to 11800 then dimbing right turn to 13500 on ETL R-104 to ETL VOR/DME and hold. </p>
---	---

AWOS-3 118.325	DENVER CENTER 125.35 354.05	UNICOM 123.0 (CTAF) 0
--------------------------	---------------------------------------	---------------------------------

Procedure NA for arrivals at ETL VOR/DME on V382 northwest bound.



ELEV 9070		TDZE 9037
-----------	--	-----------



CATEGORY	A	B	C	D
S-9	11340-1¼ 2303 (2300-1¼)	11340-1½ 2303 (2300-1½)		NA
CIRCLING	11340-1¼ 2270 (2300-1¼)	11340-1½ 2270 (2300-1½)		NA

HIRL Rwy 9-27
 REIL Rwy 9 and 27

SW-1, 23 JAN 2025 to 20 FEB 2025

SW-1, 23 JAN 2025 to 20 FEB 2025