

WAAS CH <b>45636</b> W21A	APP CRS <b>218°</b>	Rwy Idg TDZE Apt Elev	<b>6001</b> <b>3972</b> <b>3979</b>
---------------------------------	------------------------	-----------------------------	---

# RNAV (GPS) RWY 21

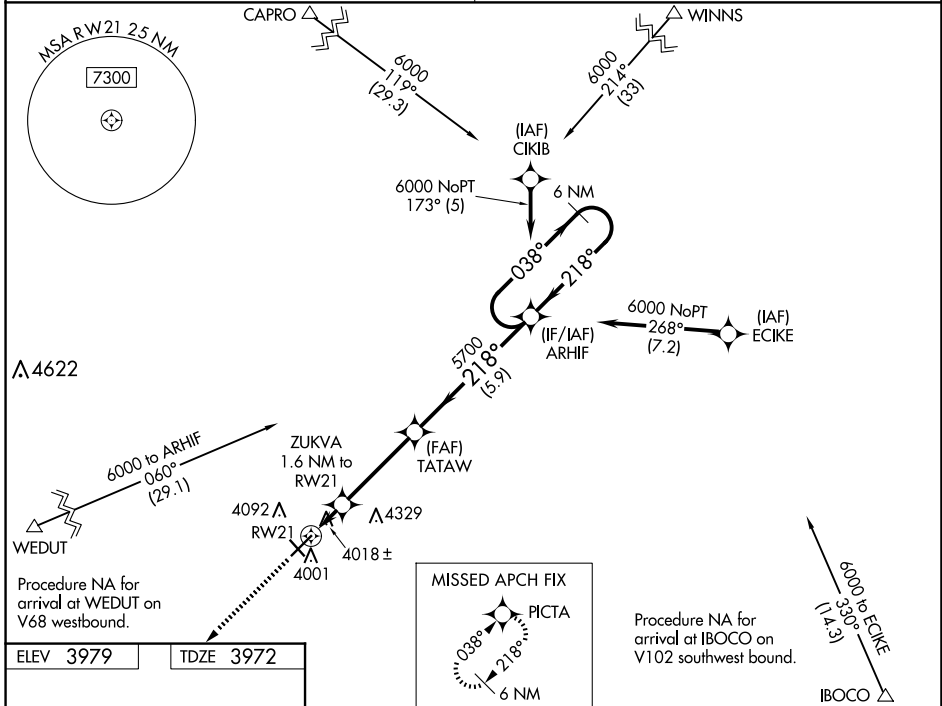
LEA COUNTY/ZIP FRANKLIN MEML (E06)

**NA** Baro-VNAV NA. DME/DME RNP-0.3 NA. Use Hobbs altimeter setting, when not received, procedure NA. Helicopter visibility reduction below 3/4 SM NA. Night landing: Rwy 3, 12, 30 NA.

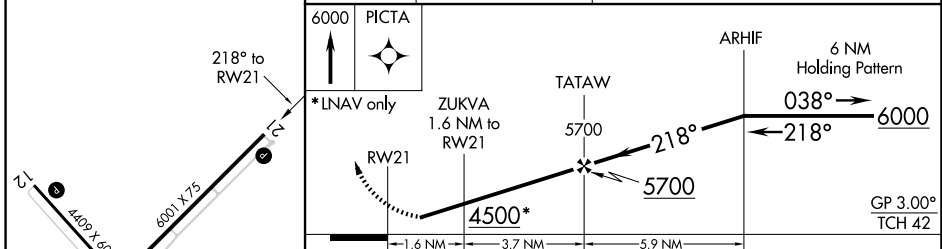
MISSED APPROACH: Climb to 6000 direct PICTA and hold.

FORT WORTH CENTER **133.1 298.95**

UNICOM **122.8 (CTAF) 0**



ELEV 3979	TDZE 3972
-----------	-----------



CATEGORY	A	B	C	D
LPV DA	4310-1 1/8	338 (400-1 1/8)		NA
LNAV/VNAV DA	4310-1 1/8	338 (400-1 1/8)		NA
LNAV MDA	4360-1	388 (400-1)	4360-1 1/8 388 (400-1 1/8)	NA
<b>C</b> CIRCLING	4480-1	501 (600-1)	4720-2 1/4 741 (800-2 1/4)	NA

SW-1, 23 JAN 2025 to 20 FEB 2025

SW-1, 23 JAN 2025 to 20 FEB 2025

MIRL Rwy 3-21 and 12-30 0

GP 3.00°  
TCH 42