

EPKEE SEVEN DEPARTURE (RNAV)

AL-9077 (FAA)

DENVER INTL (DEN)
DENVER, COLORADO

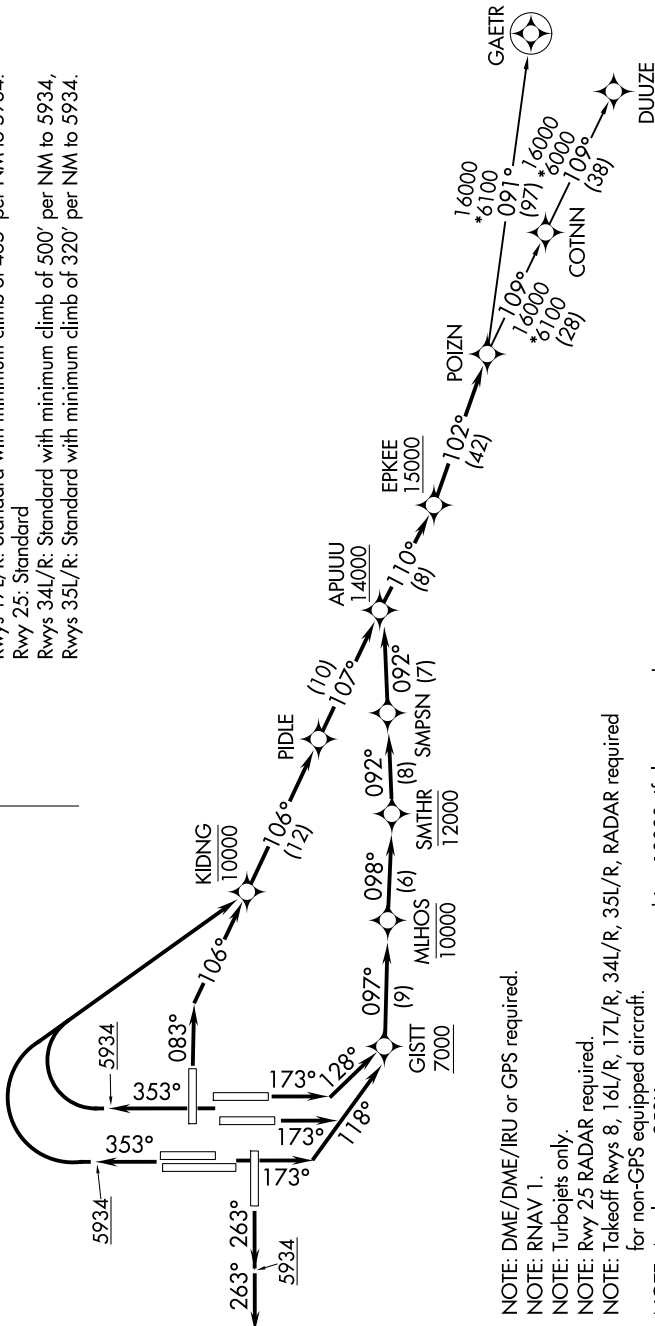
SW-1, 23 JAN 2025 to 20 FEB 2025

D-ATIS DEP
134.025
CLNC DEL
118.75
CPDLC
DENVER DEP CON
128.25 371.95

**TOP ALTITUDE:
FL230**

TAKEOFF MINIMUMS

- Rwys 7, 26: NA-ATC.
- Rwys 8, 16L: Standard with minimum climb of 400' per NM to 5934.
- Rwy 16R: Standard with minimum climb of 450' per NM to 5934.
- Rwys 17L/R: Standard with minimum climb of 465' per NM to 5934.
- Rwy 25: Standard
- Rwys 34L/R: Standard with minimum climb of 500' per NM to 5934.
- Rwys 35L/R: Standard with minimum climb of 320' per NM to 5934.



(NARRATIVE ON FOLLOWING PAGE)

NOTE: Chart not to scale.

EPKEE SEVEN DEPARTURE (RNAV)

(EPKEE7.EPKEE) 26MAR20

DENVER, COLORADO
DENVER INTL (DEN)

SW-1, 23 JAN 2025 to 20 FEB 2025