

EXTAN SEVEN DEPARTURE (RNAV)

AL-9077 (FAA)

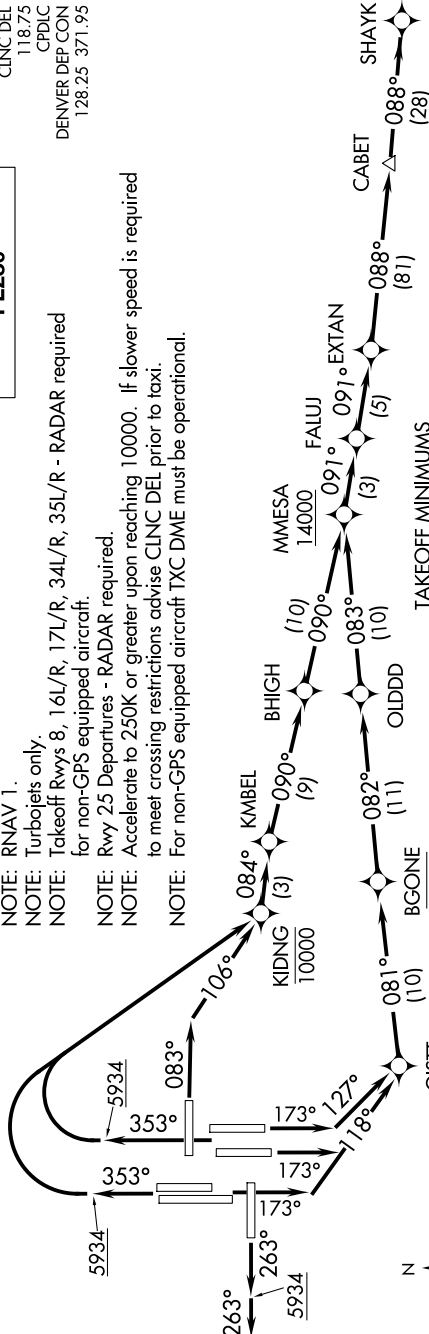
DENVER INTL (DEN)

DENVER, COLORADO

D-ATIS DEP
134.025
CLNC DEL
118.75
CPDIC
DENVER DEP CON
128.25 371.95

**TOP ALTITUDE:
FL230**

- NOTE: DME/DME/IRU or GPS required.
 NOTE: RNAV 1.
 NOTE: Turbojets only.
 NOTE: Takeoff Rwy 8, 16L/R, 17L/R, 34L/R, 35L/R - RADAR required for non-GPS equipped aircraft.
 NOTE: Rwy 25 Departures - RADAR required.
 NOTE: Accelerate to 250K or greater upon reaching 10000. If slower speed is required to meet crossing restrictions advise CLNC DEL prior to taxi.
 NOTE: For non-GPS equipped aircraft TXC DME must be operational.



TAKEOFF MINIMUMS

- Rwys 7, 26: NA-ATC.
 Rwy 8: Standard with minimum climb of 500' per NM to 5934 then minimum climb of 260' per NM to 14000.
 Rwy 16L: Standard with minimum climb of 245' per NM to 14000.
 Rwy 16R: Standard with minimum climb of 450' per NM to 5934 then minimum climb of 225' per NM to 14000.
 Rwy 17L: Standard with minimum climb of 465' per NM to 5934 then minimum climb of 280' per NM to 14000.
 Rwy 17R: Standard with minimum climb of 465' per NM to 5934 then minimum climb of 250' per NM to 14000.
 Rwy 25: Standard with minimum climb of 400' per NM to 5934.
 Rwy 34L: Standard with minimum climb of 500' per NM to 5934 then minimum climb of 220' per NM to 14000.
 Rwy 34R: Standard with minimum climb of 500' per NM to 5934 then minimum climb of 230' per NM to 14000.
 Rwys 35L/R: Standard with minimum climb of 500' per NM to 5934 then minimum climb of 240' per NM to 14000.

(NARRATIVE ON FOLLOWING PAGE)

NOTE: Chart not to scale.

SW-1, 23 JAN 2025 to 20 FEB 2025

EXTAN SEVEN DEPARTURE (RNAV)

DENVER, COLORADO

DENVER INTL (DEN)