

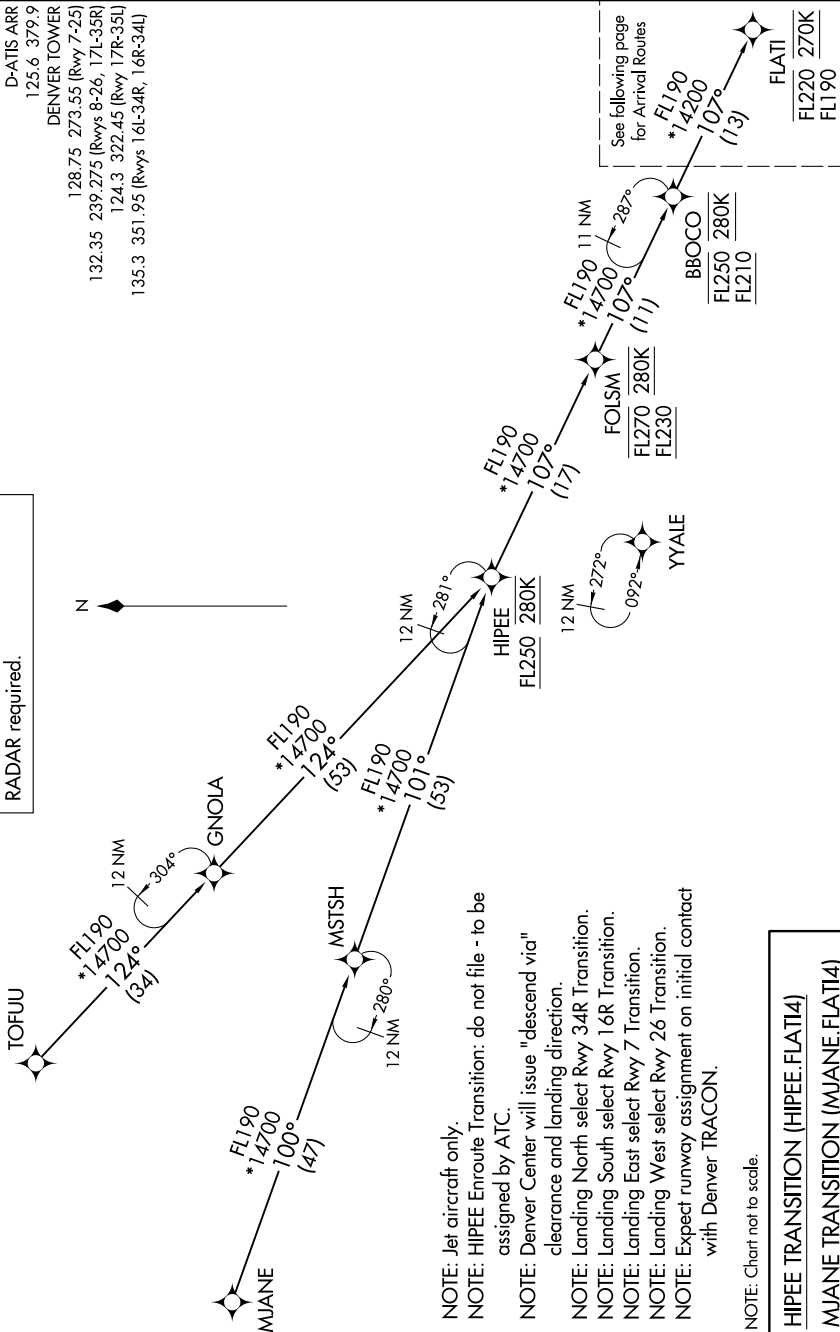
FLATI FOUR ARRIVAL (RNAV) Transition Routes

DENVER, COLORADO

SW-1, 23 JAN 2025 to 20 FEB 2025

DENVER APP CON  
 119.3 307.3  
 D-ATIS ARR  
 125.6 379.9  
 DENVER TOWER  
 128.75 273.55 (Rwy 7-25)  
 132.35 239.275 (Rwys 8-26, 17L-35R)  
 124.3 322.45 (Rwy 17R-35L)  
 135.3 351.95 (Rwys 16L-34R, 16R-34L)

RNAV 1 - DME/DME/IRU or GPS.  
 RADAR required.



See following page for Arrival Routes

FLATI  
 FL220 270K  
 FL190

- NOTE: Jet aircraft only.
- NOTE: HIPEE Enroute Transition: do not file - to be assigned by ATC.
- NOTE: Denver Center will issue "descend via" clearance and landing direction.
- NOTE: Landing North select Rwy 34R Transition.
- NOTE: Landing South select Rwy 16R Transition.
- NOTE: Landing East select Rwy 7 Transition.
- NOTE: Landing West select Rwy 26 Transition.
- NOTE: Expect runway assignment on initial contact with Denver TRACON.

NOTE: Chart not to scale.

HIPEE TRANSITION (HIPEE.FLATI4)  
MJANE TRANSITION (MJANE.FLATI4)  
TOFUU TRANSITION (TOFUU.FLATI4)

(CONTINUED ON FOLLOWING PAGE)

SW-1, 23 JAN 2025 to 20 FEB 2025

FLATI FOUR ARRIVAL (RNAV) Transition Routes

(FLATI.FLATI4) 16MAY24

DENVER, COLORADO  
DENVER INTL (DEN)