

LOC/DME I-AQD 108.5 Chan 22	APP CRS 353°	Rwy Idg 12000 TDZE 5434 Apt Elev 5434
---	------------------------	--

ILS or LOC RWY 35L

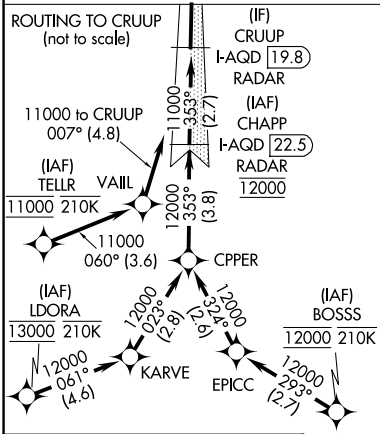
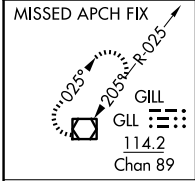
DENVER INTL (DEN)

DME or RADAR required for LOC only.
RNAV 1-GPS or RADAR required for procedure entry.

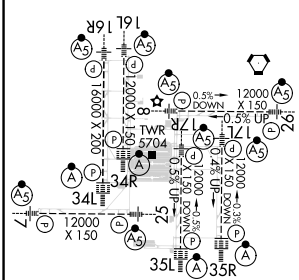
ALS-F-2
MISSED APPROACH: Climb to 10000 then right turn direct GLL VOR/DME and hold.

Simultaneous approach authorized.

D-ATIS 125.6 379.9 (ARR) 134.025 (DEP)	DENVER APP CON 119.3 307.3 (N) 120.35 379.3 (S)	DENVER TOWER 124.3 322.45	GND CON 121.35 379.175 (W) 121.85 377.1 (E)	CLNC DEL 118.75	CPDLC
--	---	-------------------------------------	---	---------------------------	-------

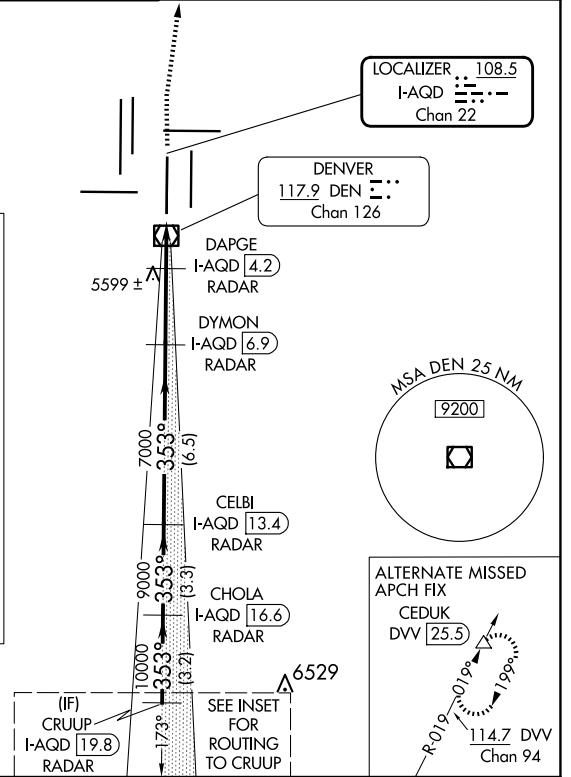


ELEV 5434 **D** TDZE 5434
HIRL all Rwys
TDZ/CL Rwys 7, 16L, 16R, 17R, 26, 34L, 34R, 35L, 35R



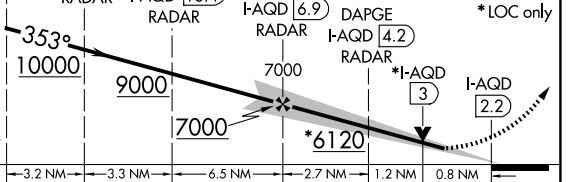
FAF to MAP 4.7 NM

Knots	60	90	120	150	180
Min:Sec	4:42	3:08	2:21	1:53	1:34



CRUUP VGSi and ILS glidepath not coincident (VGSi Angle 3.00/TCH 71).
CHOLA I-AQD 16.6
CELBI I-AQD 13.4
DYMON I-AQD 6.9
DAPGE I-AQD 4.2

10000
GLL



CATEGORY	A	B	C	D
S-ILS 35L	5634/18 200 (200-½)			
S-LOC 35L	5760/24	326 (400-½)	5760/26	326 (400-½)

ILS or LOC RWY 35L

SW-1, 23 JAN 2025 to 20 FEB 2025

SW-1, 23 JAN 2025 to 20 FEB 2025