

APP CRS	Rwy Idg	N/A
<b>124°</b>	TDZE	N/A
	Apt Elev	<b>1130</b>

# RNAV (GPS)-A

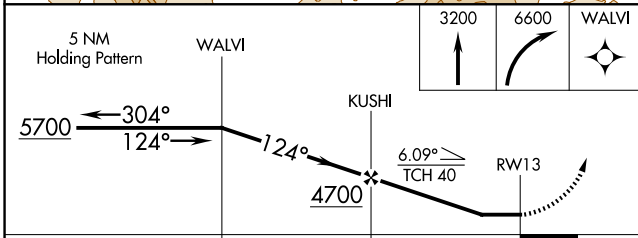
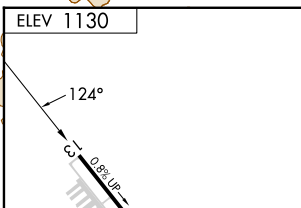
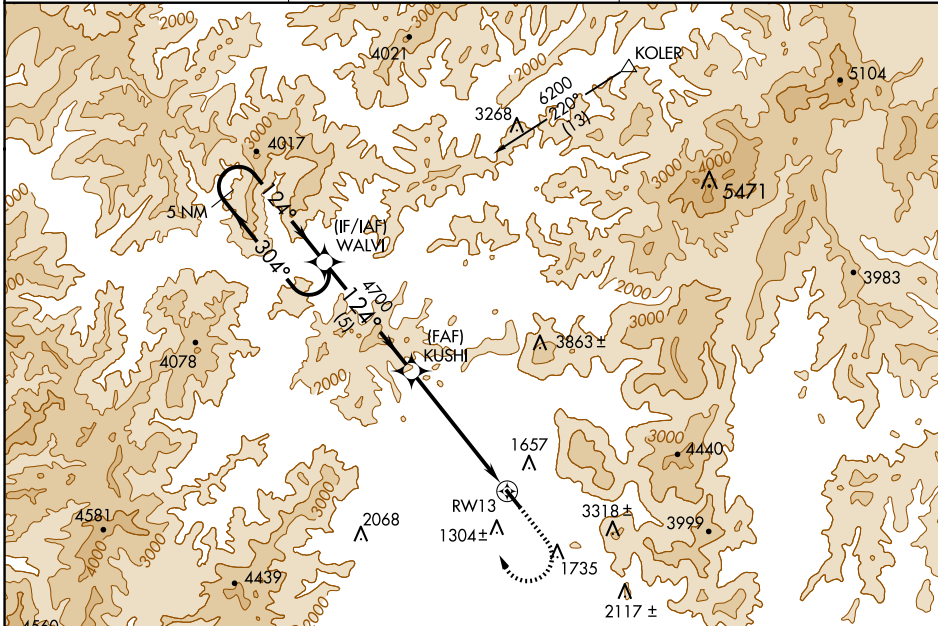
GRANTS PASS (3S8)

RNP APCH-GPS

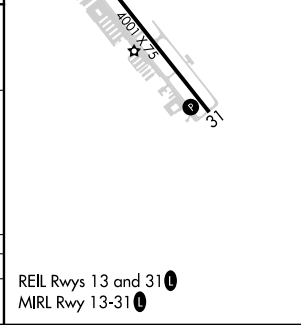
**NA** Circling NA northeast of Rwy 13-31.  
 Circling Rwy 13 NA at night.  
 Rwy 13 helicopter visibility restriction below 1 SM NA.

**MISSED APPROACH:** Climb to 3200 then climbing right turn to 6600 direct WALVI and hold, continue climb-in-hold to 6600.

AWOS-3PT <b>120.0</b>	CASCADE APP CON * <b>124.3 379.9</b>	UNICOM <b>122.8 (CTAF) 0</b>
--------------------------	---	---------------------------------



CATEGORY	A	B	C	D
<b>CIRCLING</b>	2920-1¼ 1790 (1800-1¼)	2920-1½ 1790 (1800-1½)		NA



NW-1, 23 JAN 2025 to 20 FEB 2025

NW-1, 23 JAN 2025 to 20 FEB 2025