

WAAS CH 61306 W34A	APP CRS 344°	Rwy Idg TDZE Apt Elev	6101 2201 2211
--	------------------------	-----------------------------	---

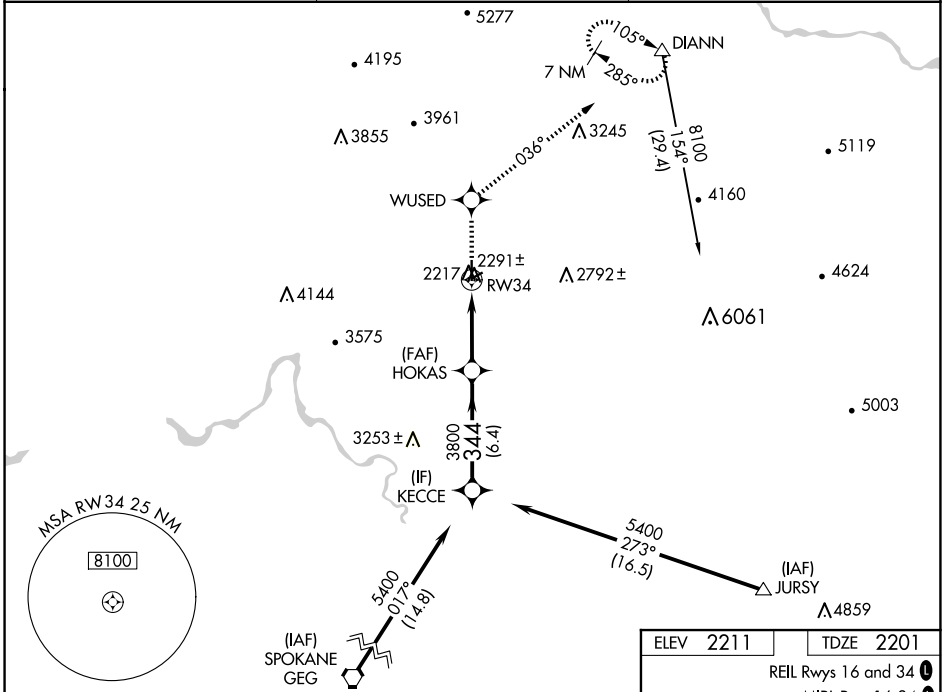
RNAV (GPS) RWY 34

DEER PARK (DEW)

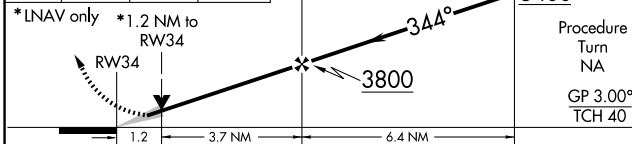
⚠ For uncompensated Baro-VNAV systems, LNAV/VNAV NA below -19°C (-2°F) or above 44°C (111°F). When local altimeter setting not received, use Spokane Intl altimeter setting and increase all DA/MDA 80 feet and all visibilities ¼ SM. Circling NA west of Rwy 16-34. DME/DME RNP-0.3 NA. VDP and Baro-VNAV NA when using Spokane Intl altimeter setting.

MISSED APPROACH: Climb to 8100 direct WUSED and via 036° track to DIANN and hold, continue climb-in-hold to 8100.

ASOS 135.175	SPOKANE APP CON 123.75 282.25	UNICOM 123.0 (CTAF) 0
------------------------	---	--



8100	WUSED	036° tr	DIANN	KECCCE
↑	◆	tr	△	◆



CATEGORY	A	B	C	D
LPV DA	2466-1		265 (300-1)	
LNAV/VNAV DA	2551-1¼		350 (400-1¼)	
LNAV MDA	2600-1 399 (400-1)		2600-1¼ 399 (400-1¼)	
C CIRCLING	2700-1 489 (500-1)	2700-1½ 489 (500-1½)		2860-2 649 (700-2)

