

VORTAC EHF 115.4 Chan 101	APP CRS 319°	Rwy Idg TDZE Apt Elev	4000 377 378
---	------------------------	-----------------------------	---

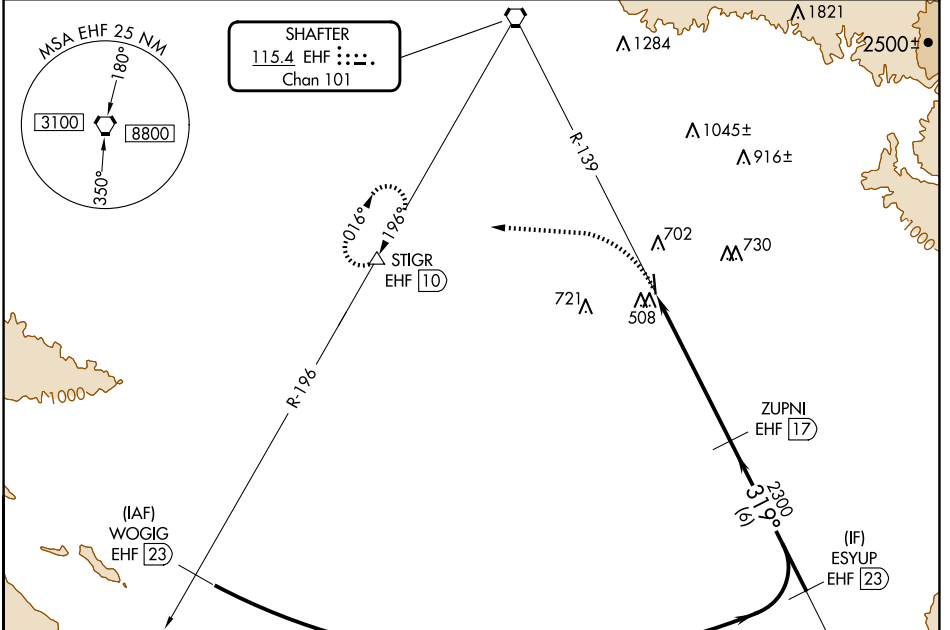
VOR/DME RWY 34

BAKERSFIELD MUNI (L45)

▼ Use Meadows fld altimeter setting. When Meadows fld altimeter setting not received, use Porterville altimeter setting and increase all MDA 80 feet, increase S-34 and Circling Cat C and D visibility ¼ mile. Visibility reduction by helicopters below ¼ SM NA. Night Landing Rwy 16 NA.

▲ NA MISSED APPROACH: Climbing left turn to 3000 on heading 260° to EHF R-196 to STIGR/EHF 10 DME and hold, continue climb-in-hold to 3000.

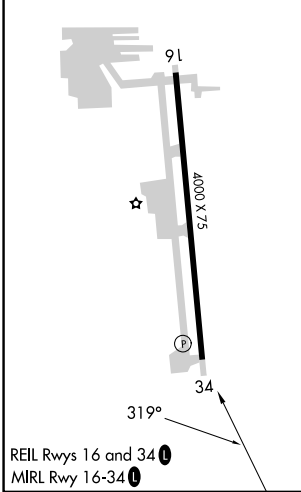
BFL ASOS 118.6	BAKERSFIELD APP CON★ 126.45 270.3	UNICOM 122.8 (CTAF) 0
--------------------------	---	---------------------------------



SW-3, 23 JAN 2025 to 20 FEB 2025

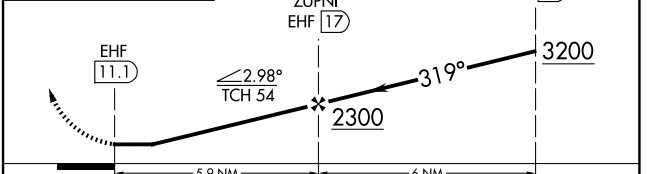
SW-3, 23 JAN 2025 to 20 FEB 2025

ELEV 378	TDZE 377
-----------------	-----------------



BAKERSFIELD, CALIFORNIA
Amdt 1B 31MAR16

3000 hdg 260° EHF R-196 STIGR ▲ VGS1 and descent angles not coincident (VGS1 Angle 4.10/TCH 53).



CATEGORY	A	B	C	D
S-34	900-1	523 (600-1)	900-1½	523 (600-1½)
C CIRCLING	1060-1	682 (700-1)	1120-2¼ 742 (800-2¼)	1120-2½ 742 (800-2½)

35°19'N-119°00'W

VOR/DME RWY 34

BAKERSFIELD MUNI (L45)