

WAAS CH <b>56231</b> <b>W13A</b>	APP CRS <b>133°</b>	Rwy Idg TDZE Apt Elev	<b>4994</b> <b>582</b> <b>588</b>
--	------------------------	-----------------------------	---

# RNAV (GPS) RWY 13

COURTLAND (9A4)

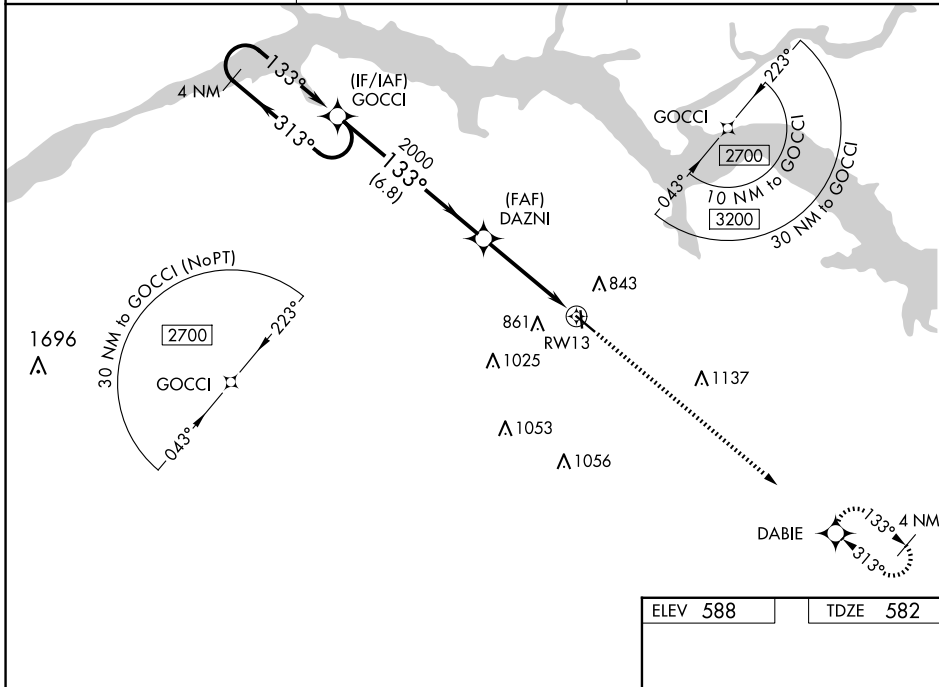
**⚠** Baro-VNAV NA when using Muscle Shoals altimeter setting. For uncompensated Baro-VNAV systems, LNAV/VNAV NA below -16°C (4°F) or above 40°C (104°F). DME/DME RNP-0.3 NA. VDP NA when using Muscle Shoals altimeter setting. When local altimeter setting not received, use Muscle Shoals altimeter setting and increase all DAs 38 feet and all MDAs 40 feet, increase LNAV/VNAV all Cats and LNAV Cats C/D visibility 1/8 SM and Circling Cat D 1/4 SM. Night landing: Rwy 18 NA. Helicopter visibility reduction below 3/4 SM NA.

**MISSED APPROACH:**  
Climb to 2700 direct DABIE and hold.

AWOS-3P  
**118.525**

HUNTSVILLE APP CON ★  
**118.05 239.0**

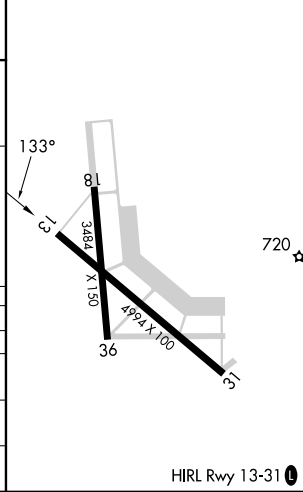
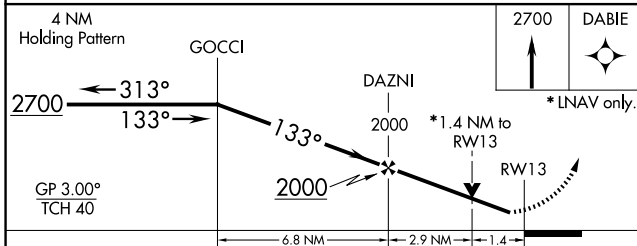
UNICOM  
**122.7 (CTAF) 0**



SE-4, 23 JAN 2025 to 20 FEB 2025

SE-4, 23 JAN 2025 to 20 FEB 2025

ELEV 588	TDZE 582
----------	----------



CATEGORY	A	B	C	D
LPV DA		782-3/4	200 (200-3/4)	
LNAV/VNAV DA		1074-1 3/4	492 (500-1 3/4)	
LNAV MDA	1080-1	498 (500-1)	1080-1 3/8	498 (500-1 3/8)
CIRCLING	1160-1 572 (600-1)	1240-1 652 (700-1)	1260-2 672 (700-2)	1360-2 1/2 772 (800-2 1/2)

HIRL Rwy 13-31 0